

# KYOTO UNIVERSITY

Facts and Figures 2023–2024



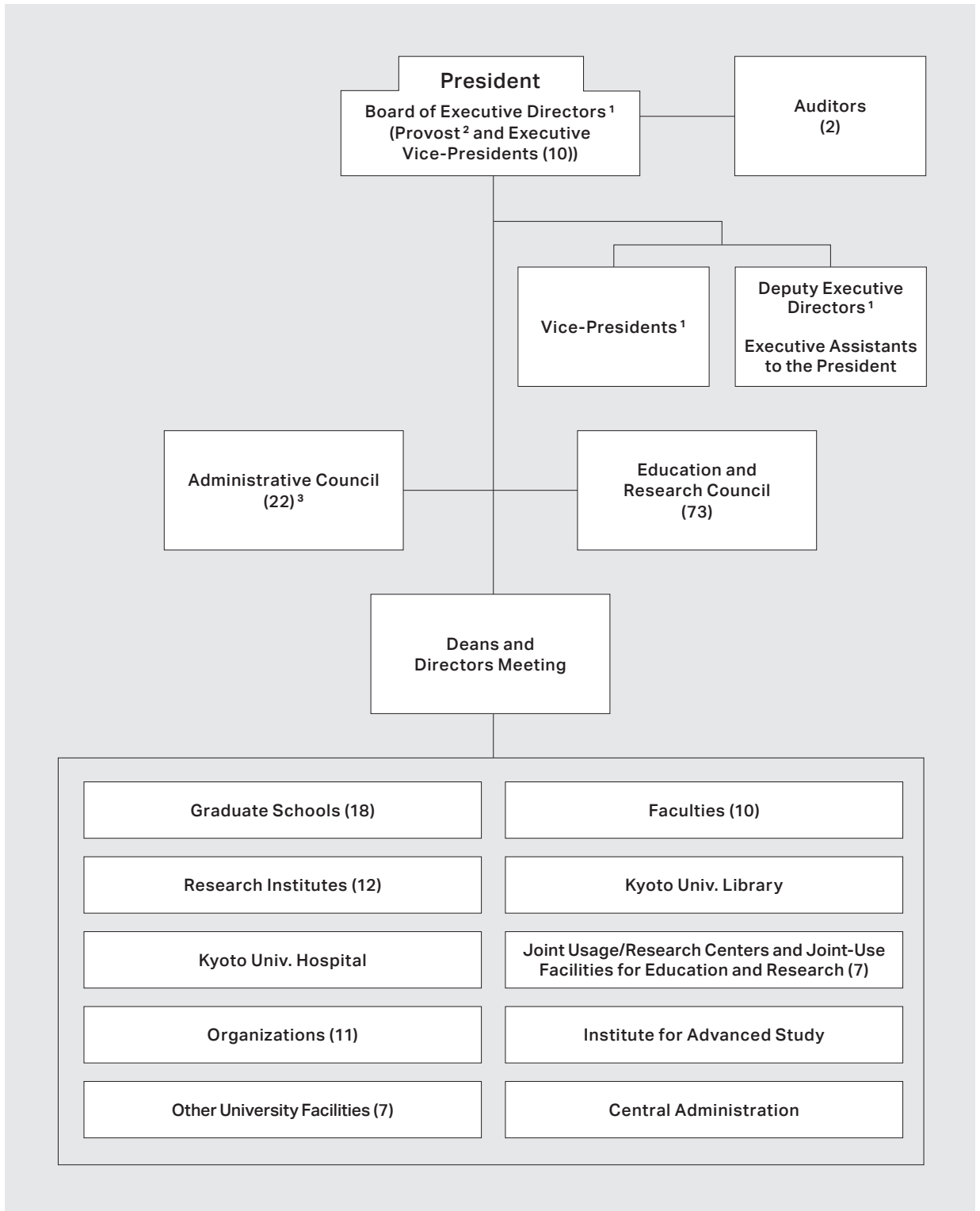
京都大学

# Contents

Organizational Structure	1
Staff and Students	2
Finance	3
Industry-Academia Collaboration	4
University Facilities	6
Academic Exchange Memoranda	7
Double/Joint Degrees	11
On-site Laboratories	12
Overseas Offices and Facilities	14
Researchers from Abroad	16
Researchers going Abroad	17
Students from Abroad	18
Students going Abroad	20

# Organizational Structure

(As of Jul. 2023)



<sup>1</sup> Each of the executive vice-presidents, vice-presidents, and deputy executive directors is in charge of a different area of university affairs.

<sup>2</sup> One executive vice-president concurrently serves as provost.

<sup>3</sup> 22 members, 7 of whom are Kyoto University faculty and staff.

# Staff and Students

## University Faculty and Staff

(As of May 1, 2023)

Position	Number				Total	
	Permanent		Fixed Term			
President	1	-	-	-	1	-
Executive Directors	10	-	-	-	10	-
Auditors	2	-	-	-	2	-
Professors	960	(31)	120	(36)	1,080	(67)
Associate Professors	725	(59)	173	(33)	898	(92)
Senior Lecturers	182	(37)	106	(23)	288	(60)
Assistant Professors	785	(37)	471	(73)	1,256	(110)
Research Associates	1	-	-	-	1	-
Researchers (Non-teaching)	-	-	451	-	451	-
Non-teaching Staff	2,893	(10)	765	(170)	3,658	(180)
Specialist Staff	7	-	68	-	75	-
<b>Total</b>	<b>5,566</b>	<b>(174)</b>	<b>2,154</b>	<b>(335)</b>	<b>7,720</b>	<b>(509)</b>

Number of international faculty and staff shown in parenthesis

## Enrollment

(As of May 1 of each year)

Year	Undergraduate	Graduate	Total
2023	12,852	9,574	22,426
2022	12,889	9,566	22,455
2021	13,038	9,577	22,615
2020	13,053	9,543	22,596
2019	13,094	9,535	22,629

## Number of Graduates

Academic year (Apr. 1–Mar. 31)	Undergraduate	Graduate		Total
		Master's course	Doctoral course	
2022	2,853	2,285	702	5,840
2021	2,998	2,307	711	6,016
2020	2,836	2,294	736	5,866
2019	2,832	2,387	681	5,900
2018	2,941	2,288	701	5,930

## Number of Degrees Conferred

Academic year (Apr. 1–Mar. 31)	Master's degree	Doctoral degree
2022	2,285	765
2021	2,307	783
2020	2,294	800
2019	2,387	777
2018	2,288	772

## Number of Professional Degrees Conferred (by Field)

Academic year (Apr. 1–Mar. 31)	Law	Medicine (Public Health)	Government	Management	Total
2022	117	32	39	101	289
2021	129	40	39	99	307
2020	129	38	38	88	293
2019	136	40	37	89	302
2018	133	26	42	81	282

# Finance

## Financial Statement

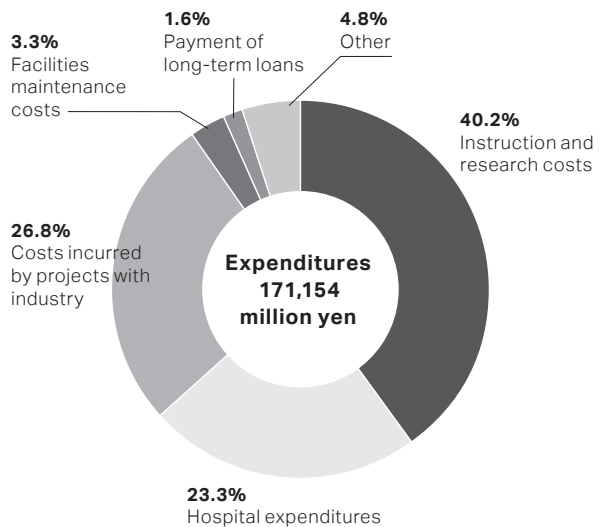
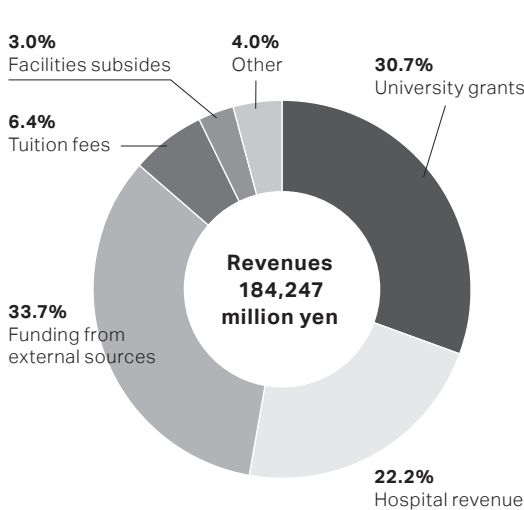
\*Calculations based on the exchange rate as of Mar. 31, 2023 (US\$1=¥133.53)

### Revenues in Academic Year 2022 (Apr. 1–Mar. 31)

Category	Million yen	Million US\$
University grants	56,644	424.20
Hospital revenue	40,816	305.67
Funding from external sources	62,111	465.15
Tuition fees	11,870	88.89
Facilities subsidies	5,614	42.04
Other	7,192	53.86
<b>Total</b>	<b>184,247</b>	<b>1379.82</b>

### Expenditures in Academic Year 2022 (Apr. 1–Mar. 31)

Category	Million yen	Million US\$
Instruction and research costs	68,738	514.78
Hospital expenditures	39,888	298.72
Costs incurred by projects with industry	45,943	344.07
Facilities maintenance costs	5,614	42.04
Payment of long-term loans	2,801	20.98
Other	8,170	61.18
<b>Total</b>	<b>171,154</b>	<b>1281.76</b>



# Industry-Academia Collaboration

## Invention Disclosure

Academic year (Apr. 1–Mar. 31)	Number of invention disclosure reports submitted
2022	350
2021	405
2020	351
2019	411
2018	382
2017	361
2016	370
2015	439

## Patent Application and Acquisition

Academic year (Apr. 1–Mar. 31)	Domestic		Foreign	
	Number of patent applications	Number of patents issued	Number of patent applications <sup>1</sup>	Number of patents issued <sup>2</sup>
2022	298 (219)	201 (141)	408 (294)	158 (119)
2021	300 (212)	171 (118)	326 (223)	215 (137)
2020	272 (182)	189 (137)	533 (392)	240 (185)
2019	304 (213)	171 (132)	390 (238)	260 (166)
2018	257 (181)	148 (107)	373 (233)	302 (157)
2017	230 (148)	137 (104)	380 (254)	277 (172)
2016	286 (201)	188 (142)	398 (290)	258 (170)
2015	315 (227)	161 (120)	360 (260)	184 (126)
2014	313 (222)	161 (127)	340 (229)	179 (113)

Number of joint applications or co-owned patents shown in parenthesis

<sup>1</sup> Applications under the Patent Cooperation Treaty, etc., count as one, regardless of the number of designated countries.

<sup>2</sup> Patents issued in multiple countries are counted once per country.

## Current Number of Patents

(As of Mar. 31, 2023)

Domestic	Foreign
1,352 (872)	1,645 (1,075)

Number of joint applications or co-owned patents shown in parenthesis.

## Utilization of Intellectual Property

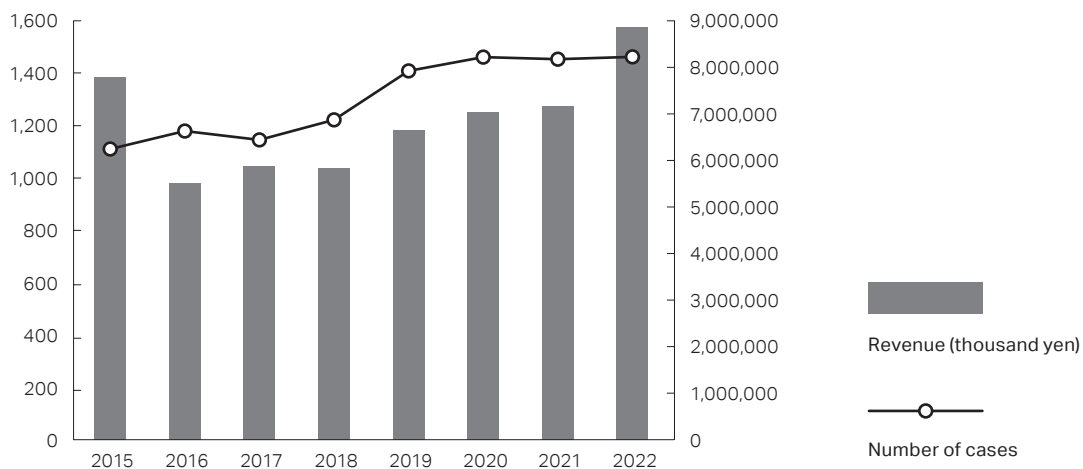
Academic year (Apr. 1–Mar. 31)	Patents <sup>1</sup>		Copyrights <sup>2</sup>		Research materials		Total
	Number of licenses <sup>2</sup>	Revenue (thousand yen)	Number of licenses	Revenue (thousand yen)	Number of licenses	Revenue (thousand yen)	Revenue (thousand yen)
2022	233	1,176,188	16	2,298	63	108,211	<b>1,286,697</b>
2021	186	928,384	16	10,119	58	59,976	<b>998,479</b>
2020	186	738,087	13	44,348	48	69,198	<b>851,633</b>
2019	218	678,293	15	2,216	71	39,560	<b>720,069</b>
2018	177	617,343	10	5,256	75	95,347	<b>717,946</b>
2017	179	640,395	11	2,639	69	60,862	<b>703,896</b>
2016	159	460,036	11	3,120	67	80,347	<b>543,503</b>
2015	144	371,154	11	2,780	53	14,768	<b>388,702</b>
2014	158	357,570	25	8,599	57	16,157	<b>382,326</b>

<sup>1</sup> Including applications pending

<sup>2</sup> Software and digital content, etc., handed in accordance with the university's Intellectual Property Policy and Invention Regulations.

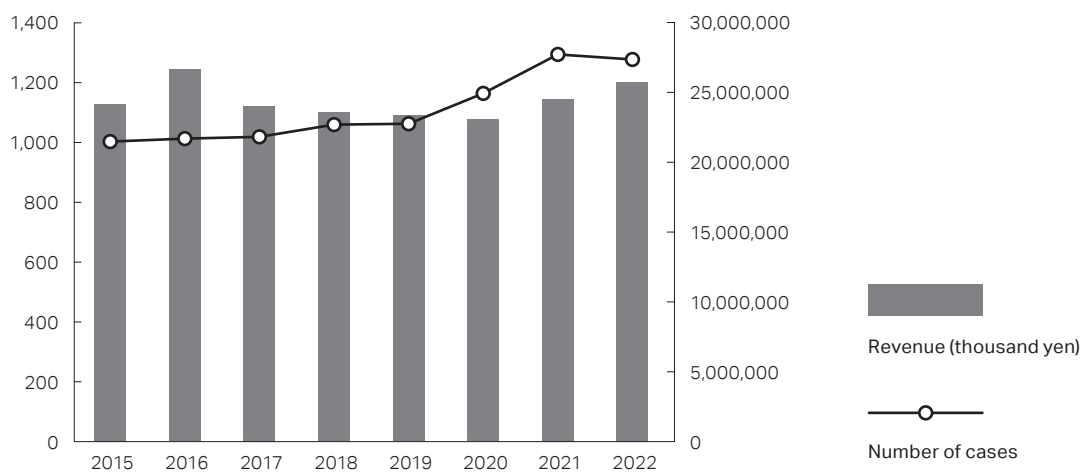
## Collaborative Research

Academic year (Apr. 1–Mar. 31)	Number of cases	Revenue (thousand yen)
2022	1,469	8,905,481
2021	1,460	7,196,734
2020	1,468	7,079,536
2019	1,415	6,678,149
2018	1,227	5,857,873
2017	1,150	5,910,914
2016	1,184	5,540,024
2015	1,115	7,831,464



## Sponsored Research

Academic year (Apr. 1–Mar. 31)	Number of cases	Revenue (thousand yen)
2022	1,283	25,888,766
2021	1,300	24,672,967
2020	1,169	23,190,655
2019	1,067	23,451,728
2018	1,064	23,695,518
2017	1,023	24,167,273
2016	1,017	26,770,423
2015	1,007	24,296,814



# University Facilities

## Library Collection

(As of Mar. 31, 2023)

	Number of books			Number of journals and periodicals		
	Japanese	International	Total	Japanese	International	Total
Main university library	755,412	249,146	<b>1,004,558</b>	14,025	6,844	<b>20,869</b>
Other university libraries and reference rooms	3,166,601	3,195,315	<b>6,361,916</b>	53,935	53,137	<b>107,072</b>
<b>Combined total</b>	<b>3,922,013</b>	<b>3,444,461</b>	<b>7,366,474</b>	<b>67,960</b>	<b>59,981</b>	<b>127,941</b>

## Kyoto University Hospital

Academic year 2022 (Apr. 1–Mar. 31)

Number of beds <sup>1</sup>	Number of inpatients	Number of outpatients
1,141	281,032	625,362

<sup>1</sup> (As of Apr. 1, 2023)

## Number of Visitors to the Kyoto University Museum <sup>1</sup>

Academic year 2022 (Apr. 1–Mar. 31)

Paying visitors	Non-paying visitors	Total
6,586	11,965	<b>18,551</b>

<sup>1</sup> Admission is free of charge for high-school students and younger.

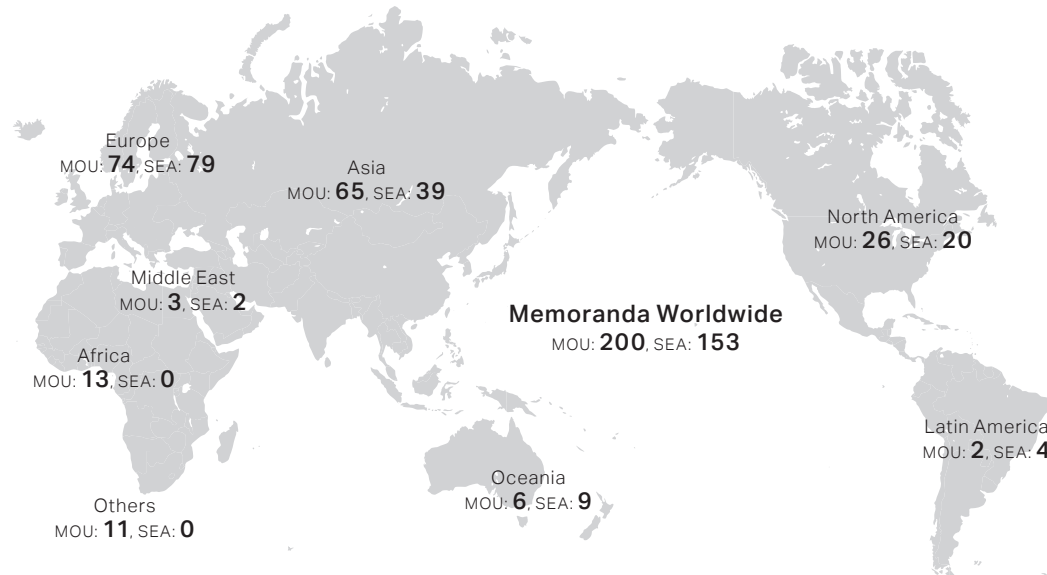
## Number of Visitors to the Seto Marine Biological Laboratory Aquarium

Academic year 2022 (Apr. 1–Mar. 31)

Paying visitors	Non-paying visitors	Total
87,639	20,526	<b>108,165</b>



# Academic Exchange Memoranda



MOU: Memorandum of Understanding / SEA: Student Exchange Agreement

(As of April 1, 2023)

Country/Region	Institution	MOU Year of conclusion	SEA Year of conclusion
<b>ASIA</b>			
Bhutan	Royal University of Bhutan	2013	-
Brunei	University of Brunei Darussalam	2014	2015
	Northwest University	1980	-
China	Wuhan University	1980	2007
	Peking University	1983	2008
	Tsinghua University	1998	2007
	Fudan University	2002	2007
	Zhejiang University	2003	2008
	University of Science and Technology of China	2005	-
	Hong Kong University of Science and Technology	2005	2006
	Nanjing University	2006	2007
	Chinese University of Hong Kong	-	2007
	University of Hong Kong	-	2007
	Shanghai Jiao Tong University	2008	2008
	Xi'an Jiaotong University	2008	2010
	Nankai University	-	2014
	Hong Kong Polytechnic University	-	2017
India	Banaras Hindu University	2015	2015
	Indian Institute of Technology Bombay (IITB)	2015	-
	Indian Institute of Technology Guwahati (IITG)	2016	2016
	Indian Institute of Technology Kanpur (IITK)	2016	-
	Indian Institute of Science	2017	-
Indonesia	North-Eastern Hill University	2018	-
	Institut Teknologi Bandung	2006	2016
	University of Indonesia	2008	2015
	Gadjah Mada University	2012	2016
	IPB University (formerly Bogor Agricultural University)	2013	-
	Hasanuddin University	2014	-
Laos	University of Riau	2020	-
	National Research and Innovation Agency (BRIN)	2022	-
	National University of Laos	2002	-
Malaysia	University of Malaya	2008	2015
	Universiti Teknologi Malaysia	2016	2017
	National University of Malaysia	2017	-
Myanmar	Mandalay Technological University	2013	-
	Yangon Technological University	2013	-
	University of Yangon	2015	-
Nepal	Yezin Agricultural University	2017	-
	Tribhuvan University	2015	-
Philippines	University of the Philippines	2015	2015
	Kyungpook National University	1980	1996
Republic of Korea	Seoul National University	1991	1997

Country/Region	Institution	MOU Year of conclusion	SEA Year of conclusion
Republic of Korea	Yonsei University	1998	1999
	Korea University	2002	2006
	Korea Advanced Institute of Science and Technology (KAIST)	2005	2017
	Pohang University of Science and Technology (POSTECH)	2007	2007
	Konkuk University	2012	-
	Ewha Womans University	2020	-
Singapore	National University of Singapore	1999	1999
	Nanyang Technological University	-	2014
Sri Lanka	University of Peradeniya	2020	-
Taiwan	National Taiwan University <sup>1</sup>	2005	2005
	National Tsing Hua University	2006	2007
	National Cheng Kung University	2019	-
	Academia Sinica	2019	-
	National Chung Hsing University	2020	-
	China Medical University	2022	-
Thailand	Kasetsart University	1984	2001
	Chulalongkorn University	2005	2006
	Thammasat University	2005	2006
	Mahidol University	2014	-
	Chiang Mai University	2014	2014
	Asian Institute of Technology	2017	-
	National Science and Technology Development Agency	2018	-
Viet Nam	Vietnam National University, Hanoi	2007	2012
	Hue University	2007	2016
	Hanoi University of Science and Technology	2009	-
	University of Da Nang	2014	2016
	Vietnam Academy of Social Sciences	2020	-
	Can Tho University	2023	-
<b>OCEANIA</b>			
Australia	University of Queensland	1981	2012
	University of Melbourne	1997	1997
	University of New South Wales	1998	1998
	University of Sydney	1999	1999
	Australian National University	2008	2008
	University of Adelaide	-	2018
New Zealand	Charles Darwin University	-	2020
	University of Auckland	1997	1997
	University of Otago	-	2016
<b>NORTH AMERICA</b>			
Canada	University of Toronto	1991	1997
	Bureau de coopération interuniversitaire (BCI)	1994	1998
	University of Waterloo	2003	2006
	McGill University	2014	2014
	University of British Columbia	2014	2015
	Concordia University	2014	2014
	Simon Fraser University	-	2020
United States of America	Wayne State University	1985	-
	Stanford University	1989	-
	University of California	1990	-
	New York University Tandon School of Engineering	1990	-
	Brown University	1992	-
	George Washington University	1998	2020
	Tufts University	1998	-
	University of Illinois at Urbana-Champaign	1999	-
	University of Pennsylvania	1999	-
	University of Hawai'i	2003	2005
	University of Michigan	2003	-
	University of Washington	2011	2011
	University of California, Davis	2011	-
	University of Wisconsin-Madison	-	2013
	University of California, San Diego	2014	2020
	Olin College of Engineering	2014	-
	University of Notre Dame (du Lac)	2014	2016
	Massachusetts Institute of Technology	2015	-
	University of Texas at Austin	-	2015
	Rice University	2017	-
	University of Rochester	-	2018
	Arizona State University	-	2018
University of California, Santa Cruz	-	2019	
University of Florida	2019	2022	
Northeastern University	-	2020	
University of Maryland, College Park	-	2020	
University of California, Los Angeles	2021	-	

Country/Region	Institution	MOU Year of conclusion	SEA Year of conclusion
<b>LATIN AMERICA</b>			
Brazil	University of São Paulo	2014	2014
Mexico	University of Guadalajara	1983	2006
	Instituto Tecnológico y de Estudios Superiores de Monterrey	-	2018
Chile	University of Chile	-	2019
<b>EUROPE (Including newly independent states)</b>			
Austria	University of Vienna <sup>1</sup>	1993	1997
Belgium	Université catholique de Louvain	1997	-
	KU Leuven	2020	2020
Czech Republic	Charles University	1990	-
	Czech Academy of Sciences	2021	-
Denmark	Copenhagen Business School	-	2021
Finland	University of Helsinki	2011	2011
	Aalto University	-	2020
France	Université Paris Cité	1979	2015
	Université de Strasbourg	1991	2000
	Institut d'études politiques de Paris (Sciences Po)	-	2009
	École normale supérieure	2009	2009
	French National Center for Scientific Research (CNRS)	2013	-
	University of Bordeaux <sup>1</sup>	2014	2015
	Agropolis International	2014	-
	École des Hautes Études en Sciences Sociales (EHESS)	2015	-
	MINES ParisTech	2016	2016
	National Institute for Oriental Languages and Cultures (INALCO)	2016	2016
	École normale supérieure Paris-Saclay (formerly ENS Cachan)	2017	-
	Université Paris-Saclay	2018	-
	École Polytechnique	-	2019
	Université Grenoble Alpes (UGA) <sup>2</sup>	2020	2020
	Sciences Po Grenoble (School of Political Studies of UGA)	-	2020
Grenoble INP (Graduate schools of Engineering and Management of UGA)	-	2021	
Germany	Freie Universität Berlin	1984	1997
	University of Munich	1989	1998
	University of Bonn	1990	1998
	Heidelberg University	1990	1997
	Humboldt University of Berlin	1998	1999
	Technical University of Munich	2006	2007
	University of Göttingen	2011	2011
	Karlsruhe Institute of Technology	2011	2011
	University of Cologne	2013	2017
	RWTH Aachen University	2014	2014
	Technical University of Berlin	2016	2016
	Universität Hamburg <sup>1</sup>	2017	2017
	TU Dresden	2018	2018
	TU Dortmund University	2019	2020
University of Stuttgart	-	2020	
Universität Westfälische Wilhelms Münster	-	2020	
Hungary	Eötvös Loránd University	-	2018
Iceland	University of Iceland	-	2016
Ireland	University College Dublin, UCD National University of Ireland	2014	2014
	University of Dublin, Trinity College Dublin	2014	2014
Italy	University of Siena	1989	-
	University of Bologna	1995	-
	Politecnico di Milano	2014	2014
	Ca' Foscari University of Venice	2015	2015
Luxembourg	Sapienza University of Rome	-	2020
	University of Luxembourg	2016	2016
Netherlands	Leiden University	1997	1997
	Utrecht University	1997	1997
	University of Groningen	2013	2014
	Wageningen University and Research	2018	2022
	Erasmus University Rotterdam	-	2019
Norway	Maastricht University	-	2020
	Norwegian University of Science and Technology	2014	2014
Poland	Jagiellonian University	2013	2017
Russia	Lomonosov Moscow State University	1987	-
	Saint Petersburg University	2013	2018
Spain	Universitat de Barcelona	2014	2014
	Universitat Autònoma de Barcelona	2017	2017
	Universidad Autónoma de Madrid	-	2019
	University of Navarra	-	2020

Country/Region	Institution	MOU Year of conclusion	SEA Year of conclusion
Sweden	Uppsala University	1997	1997
	Stockholm University	1997	1997
	Royal Institute of Technology (KTH)	2005	2005
	Lund University	2014	-
	Chalmers University of Technology	-	2018
Switzerland	Swiss Federal Institute of Technology (ETH Zurich)	1989	-
	University of Lausanne	1997	1999
	University of Zurich <sup>1</sup>	2013	2014
	Ecole Polytechnique Fédérale de Lausanne (EPFL)	2015	2015
	University of Bern	-	2018
Ukraine	National Technical University of Ukraine "Kyiv Polytechnic Institute"	2013	-
	Taras Shevchenko National University of Kyiv	2014	-
United Kingdom	University of Sussex	1989	2016
	University of Oxford	1991	-
	University of Cambridge	1997	-
	University of Nottingham	1999	2018
	University of Edinburgh	2005	2011
	University of Sheffield	2006	2006
	University of Manchester	2006	2007
	University of Bristol	2011	2012
	Institute of Education University of London	2011	-
	Newcastle University	-	2011
	University of Glasgow	2013	2016
	King's College London (KCL)	2014	2014
	University of Birmingham	2015	2011
	University of Leeds	2016	2016
	University of Southampton	2017	2012
	University of Exeter	-	2018
Durham University	-	2018	
University of Warwick	-	2018	
Queen Mary University of London	2020	2019	
University College London	-	2020	
University of York	-	2020	
<b>MIDDLE EAST</b>			
Israel	Tel Aviv University	1999	2006
Saudi Arabia	King Abdulaziz University (KAU)	2014	-
Turkey	Koç University	2011	2011
<b>AFRICA</b>			
Botswana	University of Botswana	2012	-
Democratic Republic of the Congo	University of Kinshasa	2015	-
Egypt	Egyptian Academy of Science, Research and Technology	2010	-
	Egypt-Japan University of Science and Technology (E-JUST)	2012	-
Ethiopia	Addis Ababa University	2017	-
Ghana	University of Ghana	2017	-
Guinea	University of Conakry	2013	-
Madagascar	University of Antananarivo	2019	-
Morocco	Mohammed V University of Rabat	2016	-
Sudan	University of Khartoum	2001	-
Tanzania	Sokoine University of Agriculture	2019	-
Uganda	Makerere University	2015	-
Zambia	University of Zambia	2019	-
<b>OTHERS</b>			
	United Nations University	2005	-
	ASEAN University Network (AUN)	2009	-
	Japan International Cooperation Agency (JICA)	2010	-
	United Nations Educational, Scientific and Cultural Organization (UNESCO)	2012	-
	ASEAN+3 University Network (ASEAN+3 UNet)	2012	-
	ITER International Fusion Energy Organization	2014	-
	Center for International Forestry Research (CIFOR)	2016	-
	Food and Agriculture Organization of the United Nations (FAO)	2016	-
	United Nations Development Programme (UNDP)	2016	-
	UNESCO Chairs	2018	-
	Organisation for Economic Co-operation and Development (OECD)	2019	-
<b>Total</b>		<b>200</b>	<b>153</b>

Many of Kyoto University's individual faculties, graduate schools, institutes, and centers also have direct cooperation and exchange agreements with a wide range of institutions abroad. Details are available online at: [www.oc.kyoto-u.ac.jp/agreement/en/list](http://www.oc.kyoto-u.ac.jp/agreement/en/list)

<sup>1</sup> Strategic Partners  
Details are available online at: [www.oc.kyoto-u.ac.jp/agreement/en/sp/](http://www.oc.kyoto-u.ac.jp/agreement/en/sp/)

<sup>2</sup> The SEA does not include Sciences Po Grenoble-UGA, Grenoble INP-UGA, or ENSAG-UGA.

# Double/Joint Degrees

## Double Degrees

(As of April 1, 2023)

Country/Region	University	Kyoto University graduate school	Degree
France	University of Bordeaux	Energy Science	Doctoral
	École des Hautes Études en Sciences Sociales	Letters	Doctoral
UK	University of Glasgow	Economics	Doctoral
Germany	Universität Hamburg	Management	Master's (Professional)
USA	Cornell University	Management	Master's (Professional)
China	Tsinghua University	Engineering	Master's
		Global Environmental Studies	Master's
	Zhejiang University	Energy Science	Doctoral
Indonesia	Institut Teknologi Bandung	Agriculture	Master's
	Gadjah Mada University	Agriculture	Master's
	IPB University (formerly Bogor Agricultural University)	Agriculture	Master's
		Global Environmental Studies	Master's
Malaysia	University of Malaya	Energy Science	Master's
Taiwan	National Taiwan University	Public Health, Medicine	Master's (Professional)
		Management	Master's (Professional)
		Agriculture	Master's
Thailand	Kasetsart University	Agriculture	Master's
		Public Health, Medicine	Master's (Professional)
	Chulalongkorn University	Energy Science	Master's
		Public Health, Medicine	Master's (Professional)
	Mahidol University	Agriculture	Master's
		Global Environmental Studies	Master's
King Mongkut's University of Technology Thonburi	Energy Science	Master's	

## Joint Degrees

(As of April 1, 2023)

Country/Region	University	Kyoto University graduate school	Degree
Canada	McGill University	Medicine	Doctoral
Germany	Heidelberg University	Letters	Master's
UK	University of Glasgow	Economics (Jointly provided by the three universities)	Master's
Spain	University of Barcelona		

# On-site Laboratories

The pursuit of “a flexible and dynamic approach to knowledge creation” is one component of Kyoto University’s strategy as a Designated National University. As part of those efforts, the university is implementing an initiative to establish locally-managed “On-site Laboratories” in cooperation with overseas partner universities and research institutions.

(As of June 1, 2023)

## Kyoto University Research Center San Diego

Established by	The Graduate School of Medicine
Partner institution	The University of California San Diego (UCSD), USA
Location	San Diego, USA
Functions	Joint research in the field of medicine, recruitment of international students, and expansion of collaboration with industrial partners

## IFOM-KU Joint Research Laboratory

Established by	The Graduate School of Medicine
Partner institution	The AIRC Institute of Molecular Oncology (IFOM ETS), Italy
Location	Kyoto, Japan
Functions	Advanced cancer biology research, and training of graduate students and early-career researchers

## Kyoto University-Tsinghua University Cooperative Research and Education Center for Environmental Technology

Established by	The Graduate School of Engineering The Graduate School of Global Environmental Studies (GSGES)
Partner institution	Shenzhen International Graduate School, Tsinghua University, China
Location	Shenzhen, China
Functions	Research and education in environmental engineering fields, and international double degree programs

## Kyoto University On-site Laboratory at Mahidol University for Educational and Research Collaboration in Environmental Studies

Established by	The Graduate School of Global Environmental Studies (GSGES)
Co-organized by	The Graduate School of Engineering The Graduate School of Agriculture The Graduate School of Medicine
Partner institution	Mahidol University, Thailand
Location	Bangkok, Thailand
Functions	Research to address environmental problems, recruitment of international students, expansion of international double degree programs, and possible development of an international joint degree program

## Smart Materials Research Center

Established by	The Institute for Integrated Cell-Material Sciences (iCeMS), Kyoto University Institute for Advanced Study (KUIAS)
Partner institution	Vidyasirimedhi Institute of Science and Technology (VISTEC), Thailand
Location	Rayong, Thailand
Functions	Research in materials science fields, and training of graduate students and early-career researchers for active roles in international academia

## Kyoto University Shanghai Lab

Established by	The Institute for Chemical Research
Partner institution	Fudan University, China
Location	Shanghai, China
Functions	Promotion of cutting-edge chemical research, expansion of international collaboration and equipment sharing, and exchange of human resources with partner institutions

## iPS Cell Research Center at Gladstone Institutes

Established by	The Center for iPS Cell Research and Application (CiRA)
Partner institution	Gladstone Institutes, USA
Location	San Francisco, USA
Functions	Advanced research on iPS cells, training of early-career researchers, and recruitment of international students

## Center for Integrated Biosystems

Established by	The Institute for Integrated Cell-Material Sciences (iCeMS), Kyoto University Institute for Advanced Study (KUIAS)
Partner institution	Academia Sinica, Taiwan
Location	Taipei, Taiwan
Functions	Advanced research in biomedical science fields, expansion of interdisciplinary collaboration, and recruitment of international researchers and students

## Quantum Nano Medicine Research Center

Established by	The Institute for Integrated Cell-Material Sciences (iCeMS), Kyoto University Institute for Advanced Study (KUIAS)
Partner institution	The University of California Los Angeles (UCLA), USA
Location	Kyoto, Japan
Functions	Quantum nano-medicine research with a focus on cancer treatment applications, development of new research fields, and expansion of collaboration with UCLA and industrial partners

## Laboratory for Green Porous Materials

Established by	The Institute for Integrated Cell-Material Sciences (iCeMS), Kyoto University Institute for Advanced Study (KUIAS)
Partner institution	The Institute of Materials Research and Engineering (IMRE), Agency for Science, Technology and Research (A*STAR), Singapore
Location	Singapore
Functions	Research on environmental catalysis using porous materials, the development of new fields of study that contribute to the environment, and the promotion of cutting-edge interdisciplinary research

## Center for Integrated Data-Material Sciences (iDM)

Established by	The Institute for Integrated Cell-Material Sciences (iCeMS), Kyoto University Institute for Advanced Study (KUIAS)
Partner institution	The MacDiarmid Institute (MDI), New Zealand
Location	Wellington, New Zealand
Functions	Deepen research on material sciences using computational science and data science, and internationalize Kyoto University's research and education activities by enhancing collaboration with industry and local research institutions

# Overseas Offices and Facilities

## Kyoto University Overseas Offices

(As of April 1, 2023)

Name	Country/Region	City	Year established
Kyoto University European Center	Germany	Heidelberg	2014
Kyoto University ASEAN Center	Thailand	Bangkok	2014
Kyoto University North American Center (Kyoto University San Diego Liaison Office)	United States of America	Washington, DC (San Diego)	2018 (2017)
Kyoto University Africa Office	Ethiopia	Addis Ababa	2018

## Departmental Overseas Offices and Facilities

(As of April 1, 2023)

Affiliation	Name	Country/Region	City	Year established
Graduate School of Science	Satellite Office at Chulalongkorn University	Thailand	Bangkok	2004
	Research Base for Biodiversity of African Tropical Forest	Gabon	Libreville	2009
Astronomical Observatory, Graduate School of Science	CHAIN Peru Station	Peru	Ica	2010
Graduate School of Medicine	Kyoto University Research Center San Diego	United States of America	San Diego	2019
Graduate School of Engineering/ Graduate School of Global Environmental Studies	Kyoto University-Tsinghua University Cooperative Research and Education Center for Environmental Technology	China	Shenzhen	2005
Graduate School of Engineering	Global Center of Excellence Kyoto University - Institut Teknologi Bandung for GCOE Joint Research and Education Center	Indonesia	Bandung	2008
	Kyoto University-University of Malaya Overseas Base in Malaysia for Education and Research	Malaysia	Kuala Lumpur	2010
Graduate School of Agriculture	Khon Kaen Research Office of the Graduate School of Agriculture, Kyoto University	Thailand	Khon Kaen	1996
	Kyoto University Research Office at Kasetsart University	Thailand	Bangkok	2014
	Overseas Office of Graduate School of Agriculture, Kyoto University at NTU	Taiwan	Taipei	2015
	JASTIP Bioresource & Biodiversity Joint Laboratory	Indonesia	Bogor	2015
Graduate School of Agriculture/Graduate School of Global Environmental Studies	Kyoto University Satellite Office at Bogor Agricultural University	Indonesia	Bogor	2015
Graduate School of Asian and African Area Studies/Center for Southeast Asian Studies	Laos Field Station	Laos	Vientiane	2002
	Makassar Field Station	Indonesia	Makassar	2003
	Myanmar Field Station	Myanmar	Yangon, Yezin	2003
	Cambodia Field Station	Cambodia	Phnom Penh	2010
Graduate School of Asian and African Area Studies/Center for African Area Studies	Ethiopia Field Station	Ethiopia	Addis Ababa, Jinka	2003
	Cameroon Field Station	Cameroon	Yaounde	2003
	Nairobi Field Station	Kenya	Nairobi	2003
	Zambia Field Station	Zambia	Lusaka	2003
	Tanzania Field Station	Tanzania	Dar es Salaam	2003
	Namibia Field Station	Namibia	Windhoek	2008
	Niger Field Station	Niger	Niamey	2012
	Madagascar Field Station of Kyoto University	Republic of Madagascar	Antananarivo	2021
Guinea Field Station	Republic of Guinea	Bossou	2023	



Affiliation	Name	Country/Region	City	Year established
Graduate School of Global Environmental Studies	Hue Kyoto University GSGES Office	Viet Nam	Hue	2006
	Hanoi Kyoto University GSGES Office	Viet Nam	Hanoi	2008
	Mahidol Kyoto University GSGES Office (Kyoto University On-Site Laboratory at Mahidol University for Educational and Research Collaboration in Environmental Studies)	Thailand	Bangkok	2016
Graduate School of Global Environmental Studies/Graduate School of Engineering	Danang Kyoto University GSGES Office	Viet Nam	Da Nang	2006
Institute for Chemical Research	Kyoto University Shanghai Lab	China	Shanghai	2019
Institute of Advanced Energy	Thai Research Station Collaborative Research Laboratory	Thailand	Pathum Thani	2003
	JASTIP Energy & Environment Joint Laboratory	Thailand	Pathum Thani	2016
	JASTIP Energy & Environment Joint Laboratory	Thailand	Bangkok	2016
Research Institute for Sustainable Humanosphere	Equatorial Atmosphere Radar	Indonesia	Bukittinggi	2001
	RISH-RDUB Satellite Office	Indonesia	Bogor	2004
	ARN Joint Laboratory/JASTIP Bioresources & Biodiversity Joint Laboratory	Indonesia	Bogor	2016
Disaster Prevention Research Institute	JASTIP Disaster Prevention Joint Laboratory	Malaysia	Kuala Lumpur	2016
	JASTIP Disaster Prevention Joint Laboratory	Viet Nam	Ho Chi Minh	2016
Center for Southeast Asian Studies	Bangkok Liaison Office	Thailand	Bangkok	1963
	Jakarta Liaison Office	Indonesia	Jakarta	1970
	CSEAS Lima Office	Peru	Lima	2006
	JASTIP Headquarters	Thailand	Pathum Thani	2016
Center for iPS Cell Research and Application	iPS Cell Research Center at Gladstone Institutes	United States of America	San Francisco	2019
Wildlife Research Center	Kyoto University African Ape Expedition	Tanzania	Kigoma	1965
	Research Project on Bonobos in the Luo Reserve	Democratic Republic of the Congo	Djolu	1973
	Kalinzu Forest Research Project by the Wildlife Research Center	Uganda	Bushenyi	1997
	African Anthropological and Biological Field Research Center	Tanzania	Arusha	2006
	Ugalla Wildlife Research Station	Tanzania	Ugalla	2008
	Ghana Research Station	Ghana	Accra	2009
	Tanzania Research Station	Tanzania	Dar es Salaam	2014
	DR Congo Research Station	Democratic Republic of Congo	Mbali	2016
	Portugal Research Station	Portugal	Viana do Castelo	2016
	Kuieiras Research Station	Brazil	Estado de Amazonas	2018
	Center for Advanced Genomic Field Science	Uganda	Kampala	2019
Institute for Advanced Study	Smart Materials Research Center	Thailand	Rayong	2018
	Center for Integrated Biosystems	Taiwan	Taipei	2019
	iCeMS Taiwan Office	Taiwan	Taipei	2019
	Laboratory for Green Porous Materials	Singapore	Singapore	2020
	Center for Integrated Data-Material Sciences	New Zealand	Wellington	2021
	SUSTech-Kyoto University Advanced Energy Materials Joint Innovation Laboratory (SKAEM-JIL)	China	Shenzhen	2022
Center for African Area Studies	Kyoto University Africa Office	Ethiopia	Addis Ababa	2018

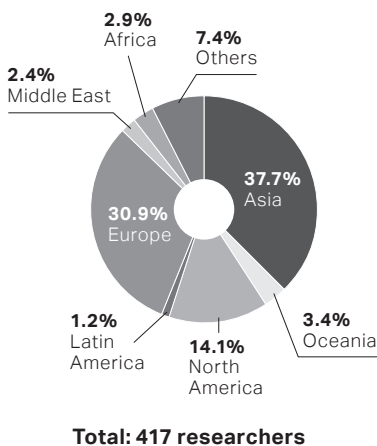
# Researchers from Abroad

Academic year 2021 (Apr. 1–Mar. 31)

Country/Region	Number of researchers
<b>ASIA (157)</b>	
Bangladesh	2
Cambodia	1
China	65
India	21
Indonesia	9
Malaysia	1
Mongolia	1
Pakistan	2
Philippines	4
Republic of Korea	19
Singapore	6
Taiwan	12
Thailand	10
Viet Nam	4
<b>OCEANIA (14)</b>	
Australia	11
New Zealand	3
<b>NORTH AMERICA (59)</b>	
Canada	15
United States of America	44
<b>LATIN AMERICA (5)</b>	
Brazil	2
Mexico	3
<b>EUROPE<sup>1</sup> (129)</b>	
Austria	5
Belgium	1
Croatia	1
Czech Republic	2
France	31
Germany	27
Hungary	3
Ireland	1
Italy	7
Netherlands	4
North Macedonia	1
Norway	2
Portugal	3
Romania	1
Russia	2
Spain	7
Sweden	3
Switzerland	5
United Kingdom	23

Country/Region	Number of researchers
<b>MIDDLE EAST (10)</b>	
Iran	6
Saudi Arabia	1
Turkey	3
<b>AFRICA (12)</b>	
Cameroon	1
Egypt	9
Ethiopia	1
Kenya	1
<b>OTHERS (31)</b>	
Others	31
<b>Total</b>	<b>417</b>

<sup>1</sup> Including newly independent states



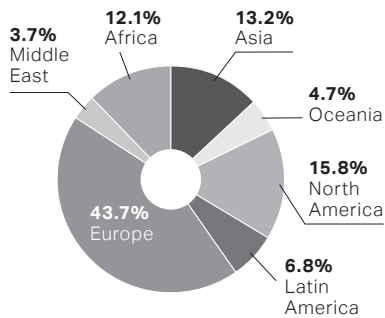
# Researchers going Abroad

Academic year 2021 (Apr. 1–Mar. 31)

Country/Region	Number of researchers
<b>ASIA (25)</b>	
China	3
Indonesia	3
Laos	1
Malaysia	2
Maldives	4
Republic of Korea	2
Singapore	2
Taiwan	1
Thailand	6
Viet Nam	1
<b>OCEANIA (9)</b>	
Australia	7
New Zealand	2
<b>NORTH AMERICA (30)</b>	
Canada	3
United States of America	27
<b>LATIN AMERICA (13)</b>	
Bolivia	1
Brazil	1
Chile	1
Colombia	1
Mexico	9
<b>EUROPE<sup>1</sup> (83)</b>	
Austria	4
Belgium	1
Czech Republic	1
Finland	1
France	22
Germany	19
Italy	9
Kyrgyz	2
Netherlands	2
Norway	1
Portugal	2
Russia	2
Spain	3
Switzerland	4
United Kingdom	8
Uzbekistan	2
<b>MIDDLE EAST (7)</b>	
Jordan	2
Saudi Arabia	1
Turkey	4

Country/Region	Number of researchers
<b>AFRICA (23)</b>	
Cameroon	5
Egypt	1
Ethiopia	2
Ghana	2
Madagascar	3
Malawi	3
Niger	2
Tanzania	1
Uganda	4
<b>Total</b>	<b>190</b>

<sup>1</sup> Including newly independent states



**Total: 190 researchers**

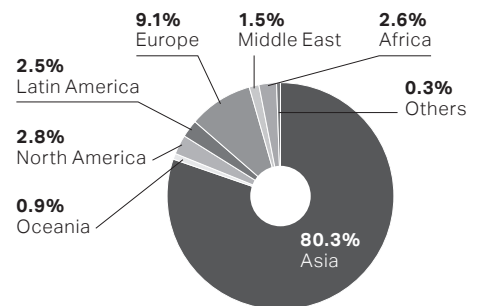
# Students from Abroad

(As of May 1, 2023)

Country/Region	Undergraduates		Graduate students				Others <sup>1</sup>	Total
	Under-graduates	Non-regular students	Master's course	Doctoral course	Professional course	Non-regular students	Non-regular students	
ASIA (2,399)								
Bangladesh		1		7		1		9
Bhutan			1					1
Brunei				1				1
Cambodia	1		2	1		2	1	7
China	87	60	558	751	71	95	43	1,665
India			3	26	3		2	34
Indonesia	16	1	28	56	3	10	3	117
Laos				3				3
Malaysia	6		8	15	2	1	7	39
Maldives			1	2				3
Mongolia	5	1	2	7			2	17
Myanmar	9	2	7	14	1	2	1	36
Nepal				6				6
Pakistan			3	8	1	1		13
Philippines	3		7	9	4		1	24
Republic of Korea	42	7	37	60	3	5	8	162
Singapore	4	1	4	1	2		3	15
Sri Lanka	3		3	5	1	2		14
Taiwan	19	7	25	58	8	6	3	126
Thailand	11		15	27	4	3	6	66
Timor-Leste			1					1
Viet Nam	6	1	8	20	1	1	3	40
OCEANIA (27)								
Australia			2	3	2		8	15
Fiji			3	1				4
New Zealand				1			2	3
Papua New Guinea							1	1
Samoa				1				1
Solomon				1		1	1	3
NORTH AMERICA (83)								
Canada	1		2	11		3	10	27
United States of America	2	4	8	15	6	9	12	56
LATIN AMERICA (74)								
Argentina				2			1	3
Belize				1				1
Brazil	2	2	4	9		2	2	21
Chile			1	4		2		7
Colombia		1	4	5				10
Costa Rica				1				1
Cuba				1		1		2
Dominican Republic		1						1
El Salvador			1				1	2
Jamaica				2				2
Mexico			2	6		1	1	10
Peru	2		1	3		1	2	9
Uruguay				1				1
Venezuela			3				1	4
EUROPE (Including newly independent states) (272)								
Armenia						2		2
Austria			1	1		1		3
Azerbaijan		1	1	1				3
Belarus							1	1
Belgium			1	1		9		11
Bulgaria					1		2	3
Denmark			1					1
Finland	1		1			1	4	7
France		4	2	6	1	19	10	42
Georgia			2	1			1	4
Germany		3	6	4		16	12	41
Greece			1	1				2
Hungary			1				1	2
Iceland					1		2	3
Ireland							1	1
Italy			2	1		6	1	10
Kazakhstan	1		1		1	1		4
Kosovo							1	1
Kyrgyz Republic				1				1
Latvia						1		1
Lithuania				1				1

Country/Region	Undergraduates		Graduate students				Others <sup>1</sup>	Total
	Under-graduates	Non-regular students	Master's course	Doctoral course	Professional course	Non-regular students	Non-regular students	
Luxembourg				1			1	2
Netherlands		1	1			3	5	10
Norway			1			1		2
Poland		1		1			3	5
Portugal			1	5				6
Romania		1		1			2	4
Russia			4	7		1	3	15
Spain		2		6		1	4	13
Sweden		1		1		4		6
Switzerland		1	1	1		6	2	11
Ukraine				1	1		14	16
United Kingdom	1	1	3	5		1	22	33
Uzbekistan				3	2			5
MIDDLE EAST (46)								
Iran	1		3	9		1	1	15
Iraq				2				2
Israel				1			1	2
Jordan						1	1	2
Kuwait				1				1
Lebanon		1		2				3
Oman			1	1	1	1		4
Saudi Arabia				1				1
Syria			2	2				4
Turkey			3	2	1	1	4	11
Yemen							1	1
AFRICA (77)								
Algeria				3				3
Benin				1				1
Botswana				1				1
Cameroon				2				2
Egypt		1	4	12	1		2	20
Ethiopia				4		1		5
Gabon							1	1
Kenya		1	5	6				12
Madagascar				1		1	1	3
Malawi				3		1		4
Morocco			1	2			1	4
Mozambique			1	1				2
Nigeria			1	2		1		4
Republic of South Africa				2				2
Rwanda			2					2
Sudan				1				1
Tanzania			1	2				3
Tunisia			1	2				3
Uganda			2	1				3
Zimbabwe				1				1
OTHERS (10)								
Others			1	1		5	3	10
<b>Total</b>	<b>223</b>	<b>108</b>	<b>803</b>	<b>1,264</b>	<b>122</b>	<b>235</b>	<b>233</b>	<b>2,988</b>

<sup>1</sup> Research centers and other academic facilities



**Total: 2,988 students**

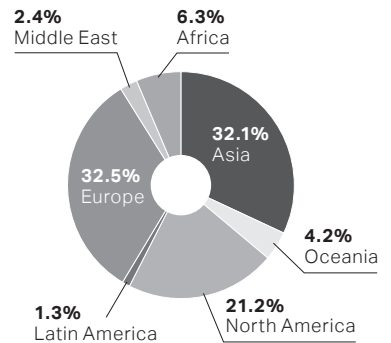
# Students going Abroad

Academic year 2022 (Apr. 1–Mar. 31)

Country/Region	Under-graduates	Master's course	Doctoral course	Professional course	Non-regular students	Total
<b>ASIA (511)</b>						
Bangladesh			2			2
Bhutan			5			5
Cambodia	1	3	6			10
China	1	7	6			14
India	2	3	15			20
Indonesia	7	10	41		1	59
Laos			14			14
Malaysia	3	16	22			41
Maldives		1				1
Mongolia		1	1			2
Myanmar			2			2
Nepal	1	1	11			13
Pakistan			1			1
Philippines	3	1	8			12
Republic of Korea	17	13	25	1		56
Singapore	2	27	23	1		53
Sri Lanka			6			6
Taiwan	24	14	36	1		75
Thailand	16	25	41	1	1	84
Viet Nam	11	12	17		1	41
<b>OCEANIA (67)</b>						
Australia	15	16	19			50
Fiji		2	2			4
New Zealand	3	5	2			10
Palau			1			1
Samoa			2			2
<b>NORTH AMERICA (337)</b>						
Canada	16	9	22			47
United States of America	57	72	153	3	5	290
<b>LATIN AMERICA (20)</b>						
Argentina			3			3
Brazil			3			3
Chile			1			1
Colombia			2			2
Costa Rica			1			1
Cuba		1				1
Mexico		3	4			7
Panama		1				1
Peru		1				1
<b>EUROPE (Including newly independent states) (517)</b>						
Austria	19	7	6	1		33
Azerbaijan		1	1			2
Belgium	1	6	7	1		15
Bulgaria		1				1
Croatia		2				2
Czech Republic		5	2			7
Denmark		1	2			3
Finland	2	3	6			11
France	5	16	28	2	3	54
Germany	18	31	43	2		94
Greece		2	7			9
Hungary			4			4
Iceland			2			2
Ireland	2		3			5
Italy	2	5	10			17
Kyrgyz Republic	1		4			5
Lithuania			1			1
Luxembourg			1			1
Malta	1					1
Netherlands	6	9	21			36
Norway	1	2	9			12
Poland	1	3	5			9
Portugal			9			9
Romania		1	2			3
Russia	1					1
Spain	2	11	26			39
Sweden	6	5	10			21
Switzerland	1	13	15			29
United Kingdom	20	27	40			87
Uzbekistan		1	3			4

Country/Region	Under-graduates	Master's course	Doctoral course	Professional course	Non-regular students	Total
<b>MIDDLE EAST (38)</b>						
Iran			2			2
Israel	1	3	2			6
Oman		1	7			8
Saudi Arabia			2			2
Turkey		3	7	1		11
United Arab Emirates		3	6			9
<b>AFRICA (101)</b>						
Benin			1			1
Botswana			4			4
Cameroon		1	7			8
Democratic Republic of the Congo			1			1
Egypt		1	4			5
Ethiopia		1	11			12
Gabon			1			1
Ghana			3			3
Kenya			9			9
Madagascar		6	8			14
Malawi			4			4
Morocco			3			3
Mozambique		1	1			2
Namibia			2			2
Niger			2			2
Republic of South Africa		1	4			5
Senegal			2			2
Sudan			1			1
Tanzania		4	9			13
Uganda		2	4	1		7
Zambia			1			1
Zimbabwe			1			1
<b>Total</b>	<b>269</b>	<b>423</b>	<b>873</b>	<b>15</b>	<b>11</b>	<b>1,591</b>

In the 2022 academic year, overseas travel increased compared to the previous year, as restrictions on international travel imposed due to the COVID-19 pandemic were eased.



**Total: 1,591 students**

## CONTACT

### **International Affairs Division**

Address: Yoshida-honmachi, Sakyo-ku, Kyoto 606-8501

Email: [ipromo@mail2.adm.kyoto-u.ac.jp](mailto:ipromo@mail2.adm.kyoto-u.ac.jp)

[www.oc.kyoto-u.ac.jp/en](http://www.oc.kyoto-u.ac.jp/en)

### **International Education and Student Mobility Division**

Address: Yoshida-honmachi, Sakyo-ku, Kyoto 606-8501

Email: [studyku@mail2.adm.kyoto-u.ac.jp](mailto:studyku@mail2.adm.kyoto-u.ac.jp)

[www.kyoto-u.ac.jp/en/education-campus](http://www.kyoto-u.ac.jp/en/education-campus)