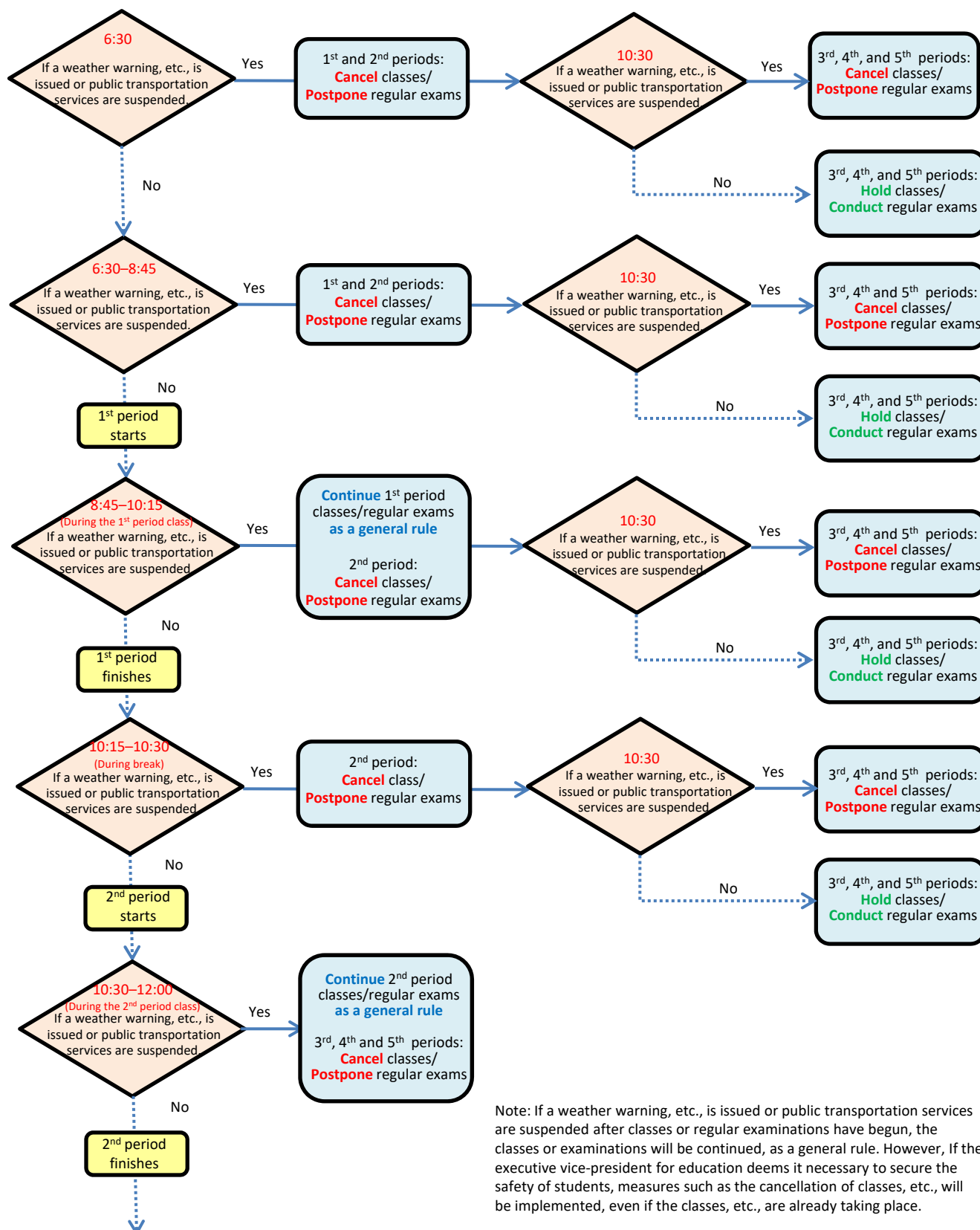
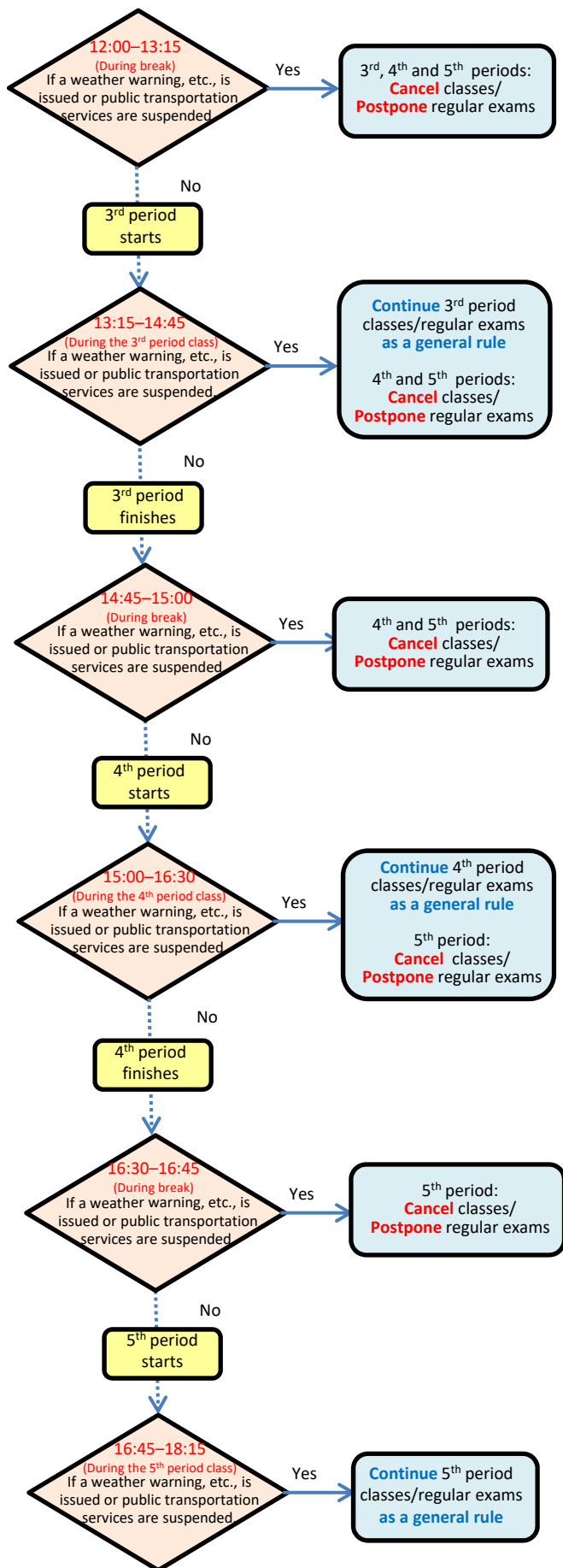


Cancellation of classes, etc., due to a weather warning, etc., or suspension of public transportation services

*In the case of a planned suspension of public transportation services, refer to page 3



Note: If a weather warning, etc., is issued or public transportation services are suspended after classes or regular examinations have begun, the classes or examinations will be continued, as a general rule. However, If the executive vice-president for education deems it necessary to secure the safety of students, measures such as the cancellation of classes, etc., will be implemented, even if the classes, etc., are already taking place.



Yoshida Campus

"Weather warning, etc."

When an emergency weather warning, storm warning, or blizzard warning (hereinafter "weather warning, etc.") has been issued in Kyoto City or an area that includes Kyoto City.

"Public transportation services are suspended"

- When Kyoto City Bus services have been wholly suspended due to the occurrence of a disaster, etc.
- When at least two of the following transportation services have been wholly or partially suspended or are planned to be suspended due to the occurrence of a disaster, etc.:
 - West Japan Railway: between Kyoto Station and Osaka Station on the Kyoto Line, between Nagahama Station and Kyoto Station on the Biwako Line, between Ōmi-Shiotsu Station and Kyoto Station on the Kosei Line, between Kyoto Station and Nara Station on the Nara Line, or between Kyoto Station and Sonobe Station on the Sagano Line
 - Hankyu Railway: between Kyoto Kawaramachi Station and Osaka Umeda Station on the Kyoto Line
 - Keihan Railway: between Demachiyang Station and Yodoyabashi Station/Nakanoshima Station on the Keihan Main Line, Kamoto Line, and Nakanoshima Line
 - Kintetsu Railway: between Kyoto Station and Yamato-Saidaiji Station on the Kyoto Line
 - Kyoto Municipal Subway: between Kokusaikaikan Station and Takeda Station on the Karasuma Line, or between Rokujo Station and Uzumasa Tenjingawa Station on the Tozai Line

Uji Campus

"Weather warning, etc."

When an emergency weather warning, etc., has been issued in Uji City or an area that includes Uji City.

"Public transportation services are suspended"

- When both of the following transportation services have been wholly or partially suspended or planned to be suspended:
 - West Japan: between Kyoto Station and Nara Station on the Nara Line
 - Keihan Railway: between Chushojima Station and Uji Station on the Uji Line

Katsura Campus

"Weather warning, etc."

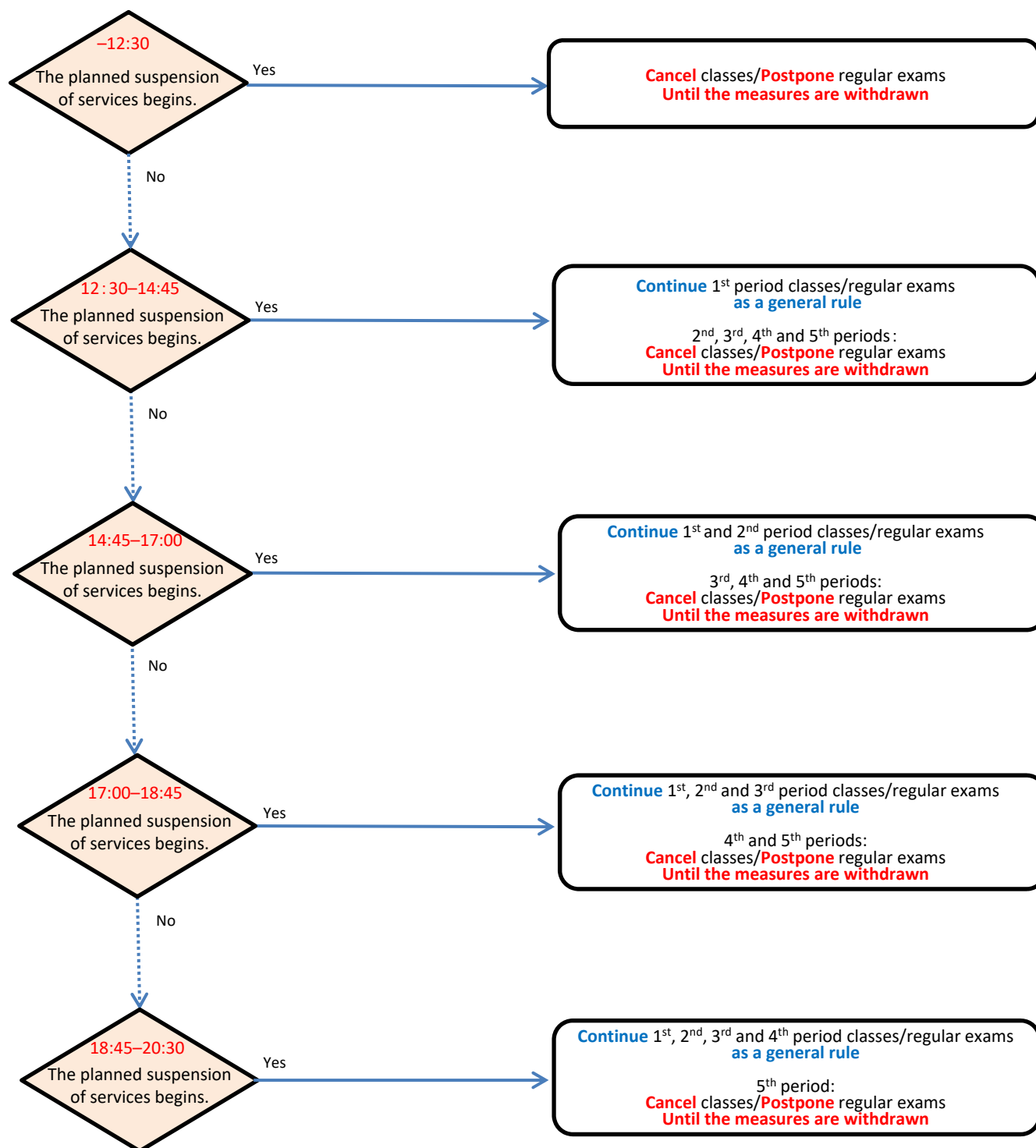
When an emergency weather warning, etc., has been issued in Kyoto City or an area that includes Kyoto City.

"Public transportation services are suspended"

- When all of the following bus services have been wholly or partially suspended or are planned to be suspended:
 - Kyoto City Bus West 6 route
 - Keihan Kyoto Kotsu Bus 20 and 20B routes
 - Yasaka Bus 6 and 6S routes
- When both of the following transportation services have been wholly or partially suspended or are planned to be suspended:
 - West Japan Railway: between Kyoto Station and Osaka Station on the Kyoto Line
 - Hankyu Railway: between Kyoto Kawaramachi Station and Osaka Umeda Station on the Kyoto Line

Note: If a weather warning, etc., is issued or public transportation services are suspended after classes or regular examinations have begun, the classes or examinations will be continued, as a general rule. However, if the executive vice-president for education deems it necessary to secure the safety of students, measures such as the cancellation of classes, etc., will be implemented, even if the classes, etc., are already taking place.

Cancellation of classes, etc.,
due to a planned suspension of public transportation services



Note: When the executive vice-president for education, after considering the circumstances of each department, deems it possible to resume classes, etc., on all or part of Yoshida Campus, Uji Campus, or Katsura Campus, measures such as the cancellation of classes, etc., will be withdrawn on all or part of the relevant campus after coordination with the heads of the relevant departments on the campus.