

KYOTO UNIVERSITY

2008/2009

FACTS AND FIGURES

CONTENTS

Chronological Table	1
Organizations	3
University Staff and Students	6
Finance	7
Industry-Academia-Collaboration	11
Academic Exchange Memoranda	12
Researchers from Abroad	15
Researchers going Abroad	16
Students from Abroad	17
Overseas Stations	20
University Facilities	22
Japanese Nobel Laureates	23
Kyoto University International Symposia	24
Campus Map	25
How to Reach Kyoto University	26

CHRONOLOGICAL TABLE

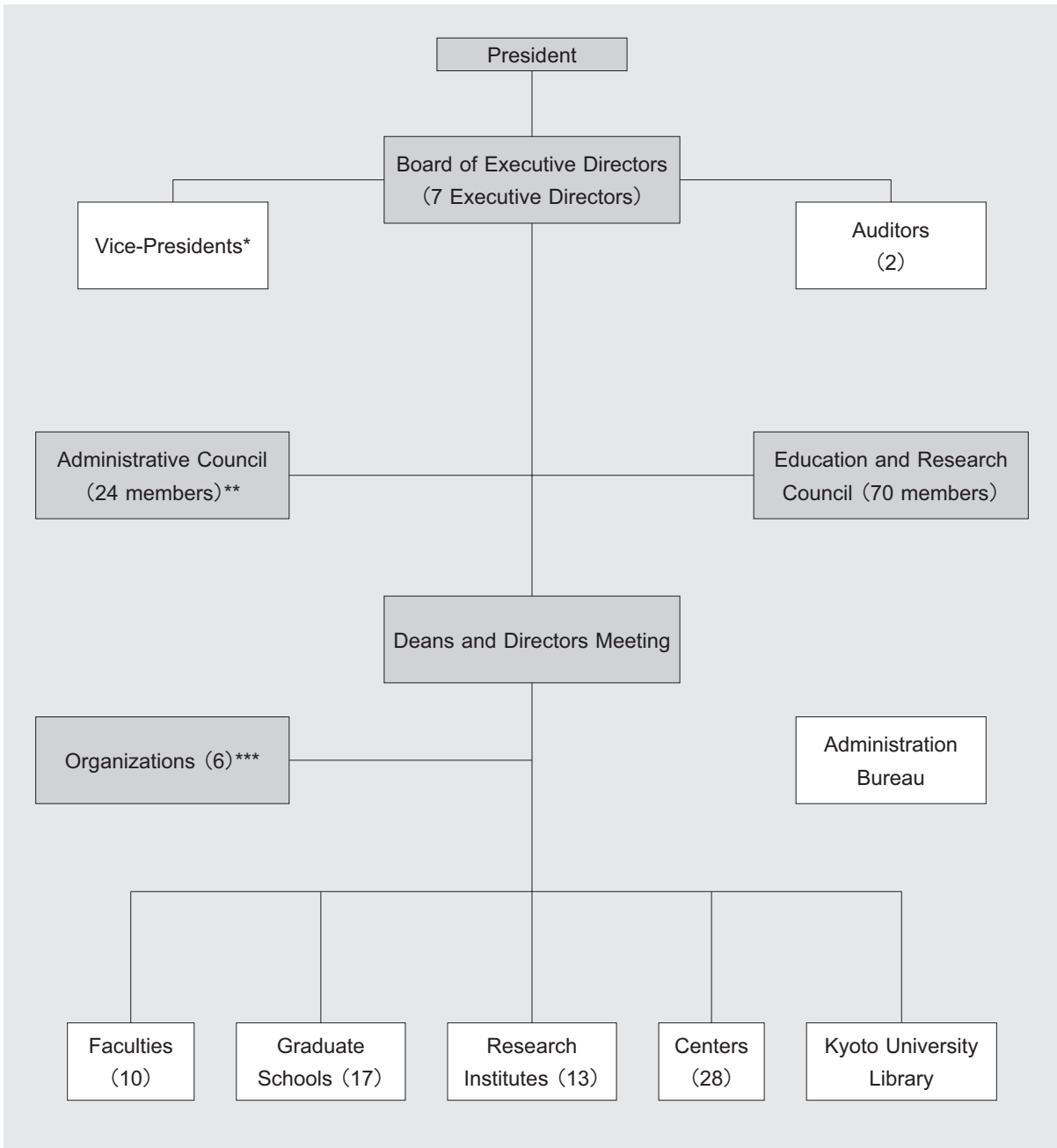
Year	Contents
1897	Founded as Kyoto Imperial University. The College of Science and Engineering was established.
1899	Colleges of Law and Medicine were established. The University Library and the University Hospital were established.
1906	The College of Letters was established.
1914	The College of Science and Engineering was divided into two, the College of Science and the College of Engineering.
1919	Colleges were reorganized into five faculties under the new University Ordinance. The Faculty of Economics was established.
1923	The Faculty of Agriculture was established.
1926	The Institute for Chemical Research was established.
1939	The Institute for Research in Humanities was established.
1941	The Chest Disease Research Institute and the Institute of Atomic Energy were established.
1944	The Wood Research Institute was established.
1946	The Research Institute for Food Science was established.
1947	Renamed KYOTO UNIVERSITY.
1949	Reorganized on the four-year schooling basis (with the exception of six years for medicine) under the new school education system. The Faculty of Education was established. The Branch School was established for general education of the freshmen and sophomores of the faculties.
1951	The Disaster Prevention Research Institute was established.
1953	Graduate courses under the new system were opened. The Yukawa Institute for Theoretical Physics was established.
1954	The Branch School was renamed the College of Liberal Arts and Sciences.
1956	The Institute for Virus Research was established.
1960	The Faculty of Pharmaceutical Sciences was established.
1962	The Institute of Economic Research was established.
1963	The Research Institute for Mathematical Sciences and the Research Reactor Institute were established.
1965	The Center for Southeast Asian Studies was established.
1966	The Center for Student Health was established.
1967	The Primate Research Institute was established.
1969	The Data Processing Center was established.
1971	The Radioisotope Research Center was established.
1972	The Research Center for Sports Science was established.
1975	The College of Medical Technology was established.
1976	The Plasma Physics Laboratory and the Radiation Biology Center were established.
1977	The Environment Preservation Center and the Center for Archaeological Operations were established.
1978	The Educational Center for Information Processing was established.
1980	The Research Center for Biomedical Engineering was established.
1981	The Radio Atmospheric Science Center was established.
1986	The Center for African Area Studies was established.
1988	The Center for Molecular Biology and Genetics was established.
1990	The Center for Student Exchange was established.
1991	The Graduate School of Human and Environmental Studies and the Center for Ecological Research were established.



Year	Contents
1992	The College of Liberal Arts and Sciences was reorganized and renamed the Faculty of Integrated Human Studies.
1994	The Research Center for Higher Education was established.
1995	The Venture Business Laboratory was established.
1996	The Graduate School of Energy Science was established. The Institute of Atomic Energy and the Plasma Physics Laboratory were merged into the Institute of Advanced Energy. The Student Counseling Center was established.
1997	The Kyoto University Museum was established. The Educational Center for Information Processing was reorganized and renamed the Center for Information and Multimedia Studies.
1998	The Graduate School of Asian and African Area Studies and the Graduate School of Informatics were established. The Chest Disease Research Institute was reorganized and renamed the Institute for Frontier Medical Sciences. The Research Center for Biomedical Engineering was closed.
1999	The Graduate School of Biostudies and the Counseling Center were established. The Student Counseling Center was closed.
2000	The Radio Atmospheric Science Center was reorganized and renamed the Radio Science Center for Space and Atmosphere. The University Archives were established.
2001	The International Innovation Center was established. The Research Institute for Food Science was closed. The Center for Data Collection and Analysis was established.
2002	The Graduate School of Global Environmental Studies was established. The Center for Data Processing and the Center for Information and Multimedia Studies were reorganized and renamed the Academic Center for Computing and Multimedia Studies. The Research Center for Low Temperature and Materials Sciences and the Fukui Institute for Fundamental Chemistry were established.
2003	The Research Center for Sports Science was closed. The Seto Marine Biological Laboratory, University Forest, Subtropical Plant Institute and Fisheries Research Station were merged into the Field Science Education and Research Center. The Research Center for Higher Education was reorganized and renamed the Center for the Promotion of Excellence in Higher Education. The Institute for the Promotion of Excellence in Higher Education and the Law School were established. The College of Medical Technology was merged into the Graduate School of Medicine.
2004	Kyoto University incorporated in accordance with the National University Corporation Law.
	The Wood Research Institute and Radio Science Center for Space and Atmosphere were unified as the Research Institute for Sustainable Humanosphere. The Center for Southeast Asian Studies was given Institute status. The Center for Molecular Biology and Genetics and the Center for Data Collection and Analysis were closed.
2005	The Organization for the Promotion of International Relations, Environment, Safety, and Health Organization, International Innovation Organization, Institute for Information Management and Communication, and Library Network were established. The Center for Student Exchange was reorganized and renamed the International Center.
2006	The School of Government was established. The Graduate School of Management was established. The Center for Integrated Area Studies was established. The Nano Medicine Merger Education Unit was established. The Institute of Sustainability Science was established. The Kyoto University Pioneering Research Unit for Next Generation was established. The Center for Women Researchers was established.
2007	The Kokoro Research Center was established. The Advanced Medical Engineering Research Unit was established. The Career-Path Promotion Unit for Young Life Scientists was established. The College of Medical Technology was closed. The International Innovation Organization was reorganized and renamed the Kyoto University Office of Society-Academia Collaboration for Innovation. The International Innovation Center was reorganized and renamed the Innovative Collaboration Center. The Institute for Integrated Cell-Material Sciences was established.
2008	The Wildlife Research Center was established. The Center for Archaeological Operations was reorganized and renamed The Center for Cultural Heritage Studies. The Unit of Synergetic Studies for Space was established.



ORGANIZATION CHARTS



* Each of the vice-presidents is in charge of a different area of university affairs (one of which is international relations).

** 24 members, half of whom are Kyoto University faculty and staff.

*** One of the six organizations is the Organization for the Promotion of International Relations.



ORGANIZATIONAL LISTING

Organizations (6)	Institute for the Promotion of Excellence in Higher Education
	Environment, Safety, and Health Organization
	Kyoto University Office of Society-Academia Collaboration for Innovation
	Organization for the Promotion of International Relations
	Institute for Information Management and Communication
	Library Network
Graduate Schools (17)	Graduate School of Letters
	Graduate School of Education
	Graduate School of Law
	Graduate School of Economics
	Graduate School of Science
	Graduate School of Medicine
	Graduate School of Pharmaceutical Sciences
	Graduate School of Engineering
	Graduate School of Agriculture — Experimental Farm
	Graduate School of Human and Environmental Studies
	Graduate School of Energy Science
	Graduate School of Asian and African Area Studies
	Graduate School of Informatics
	Graduate School of Biostudies
	Graduate School of Global Environmental Studies
School of Government	
Graduate School of Management	
Faculties (10)	Faculty of Integrated Human Studies
	Faculty of Letters
	Faculty of Education
	Faculty of Law
	Faculty of Economics
	Faculty of Science
	Faculty of Medicine — University Hospital
	Faculty of Pharmaceutical Sciences
	Faculty of Engineering
Faculty of Agriculture	
Research Institutes (13)	Institute for Chemical Research
	Institute for Research in Humanities
	Institute for Frontier Medical Sciences
	Institute of Advanced Energy
	Research Institute for Sustainable Humanosphere
	Disaster Prevention Research Institute
	Yukawa Institute for Theoretical Physics
	Institute for Virus Research
	Institute of Economic Research
	Research Institute for Mathematical Sciences
	Research Reactor Institute
	Primate Research Institute
	Center for Southeast Asian Studies

Centers (28)	Academic Center for Computing and Media Studies
	Radiation Biology Center
	Center for Ecological Research
	Center for Integrated Area Studies
	Radioisotope Research Center
	Environment Preservation Center
	International Center
	Center for the Promotion of Excellence in Higher Education
	Kyoto University Museum
	Innovative Collaboration Center
	Research Center for Low Temperature and Materials Sciences
	Field Science Education and Research Center
	Fukui Institute for Fundamental Chemistry
	Kokoro Research Center
	Wildlife Research Center
	Center for Cultural Heritage Studies
	Kyoto University Health Service
	Counseling Center
	Kyoto University Archives
	Institute for Integrated Cell-Material Sciences
	Nano Medicine Merger Education Unit
	Institute of Sustainability Science
	Kyoto University Pioneering Research Unit for Next Generation
	Advanced Medical Engineering Research Unit
	Career-Path Promotion Unit for Young Life Scientists
	Center for African Area Studies
	Center for Women Researchers
	Unit of Synergetic Studies for Space
Kyoto University Library	



UNIVERSITY STAFF AND STUDENTS

UNIVERSITY STAFF

(As of May 1, 2008)

Position	Number
President	1
Executive Directors	7
Vice-Presidents	4
Auditors	2
Professors	1,005
Associate Professors	773
Senior Lecturers	150
Assistant Professors	926
Subtotal	2,864
Non-teaching Staff	2,533
Total	5,397

ENROLLMENT

(As of each May 1)

Academic Year	Undergraduates	Graduates	Total
2008	13,399	9,308	22,707
2007	13,381	9,377	22,758
2006	13,278	9,420	22,698

NUMBER OF GRADUATES

(Academic Years 2005, 2006, 2007)

Academic Year	Undergraduates	Graduates		Total
		Master's Course	Doctoral Course	
2007	2,860	2,166	756	5,782
2006	2,797	2,164	774	5,735
2005	2,830	2,148	729	5,707

NUMBER OF DEGREES CONFERRED

Academic Year	Master's Degree	Doctoral Degree
		New System
2007	2,166	909
2006	2,164	985
2005	2,148	904

Note: Doctoral Degree Old System (1897-1957) Total 9,651

NUMBER OF PROFESSIONAL DEGREES CONFERRED

Academic Year	Graduates	
2007	Law School	191
	School of Public Health	32
	School of Government	35
	Graduate School of Management	60
2006	Law School	189
	School of Public Health	20
2005	Law School	134
	School of Public Health	33

FINANCE

Consolidated Revenues and Expenses in Net Assets

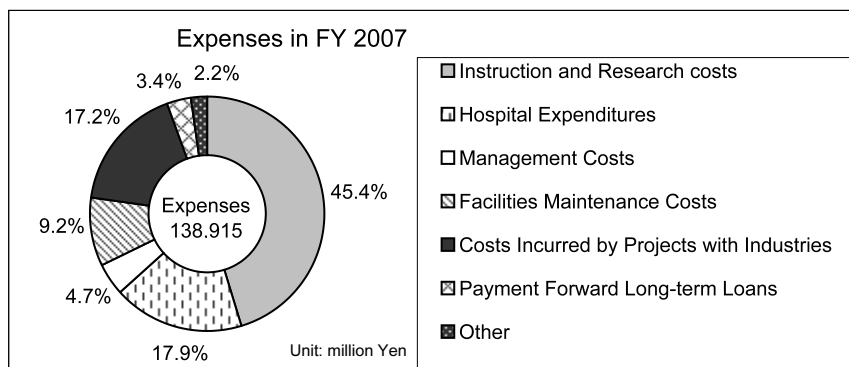
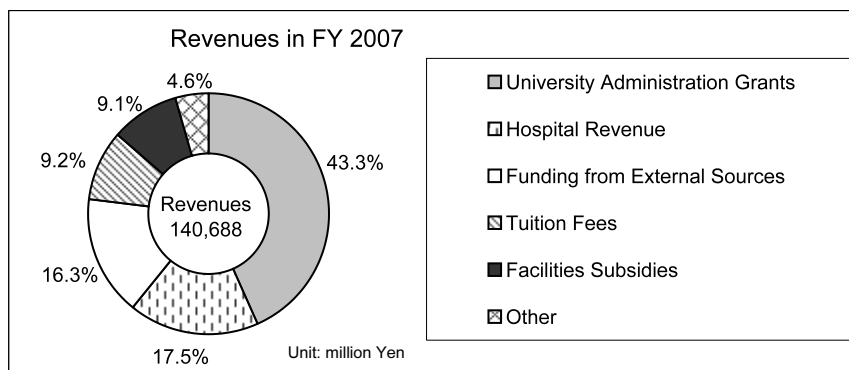
The following charts show Kyoto University's total revenues and expenses for fiscal year 2007. They also identify the major components of these revenues and expenses. Kyoto University has several revenue sources, the largest of which are university administration grants. The largest expense is instruction and research. All other expenses are incurred in supporting these two activities in addition to Kyoto University's public service activities.

Revenues in FY 2007

	Unit: million yen	US \$ 1=¥109*	
University Administration Grants	60,874	558.48	43.3%
Hospital Revenue	24,680	226.42	17.5%
Funding from External Sources	22,872	209.84	16.3%
Tuition Fees	12,975	119.04	9.2%
Facilities Subsidies	12,845	117.84	9.1%
Other	6,442	59.10	4.6%
Total	140,688	1,290.72	

Expenses in FY 2007

	Unit: million yen	US \$ 1=¥109*	
Instruction and Research costs	63,009	578.07	45.4%
Hospital Expenditures	24,846	227.95	17.9%
Management Costs	6,470	59.36	4.7%
Facilities Maintenance Costs	12,845	117.84	9.2%
Costs Incurred by Projects with Industries	23,903	219.29	17.2%
Payment Forward Long-term Loans	4,803	44.06	3.4%
Other	3,039	27.88	2.2%
Total	138,915	1,274.45	



* Calculations based on average exchange rate of late August 2008.

Balance Sheet

2007 Fiscal Year

Assets	Category	Unit: million yen	US \$ 1=¥109*
	Fixed assets	367,800	3,374.31
	Land	166,005	1,522.98
	Buildings	166,001	1,522.94
	Accumulated depreciation	▲ 40,268	▲ 369.43
	Structures	13,776	126.39
	Accumulated depreciation	▲ 3,292	▲ 30.20
	Accumulated impairment loss	▲ 1	▲ 0.01
	Equipment & furnishings	55,706	511.06
	Accumulated depreciation	▲ 32,853	▲ 301.40
	Books	31,843	292.14
	Art & other valuables	727	6.67
	Construction in progress	3,571	32.76
	Patents	30	0.27
	Leaseholds	1,205	11.05
	Software	270	2.48
	Investment securities	4,206	38.59
	Other fixed assets	874	8.02
	Current assets	49,258	451.91
	Cash & bank savings	6,482	59.47
	Accounts receivable of student payments	240	2.20
	Reserve for uncollectable payments	▲ 70	▲ 0.64
	Accounts receivable of hospital revenue	5,141	47.16
	Reserve for uncollectable payments	▲ 398	▲ 3.65
	Accrued revenue	970	8.90
	Reserve for uncollectable payments	▲ 0	▲ 0.00
	Marketable securities	36,002	330.29
	Inventories	26	0.24
	Medicine & supplies	399	3.66
	Other current assets	466	4.28
	Total assets	417,058	3,826.22

* Calculations based on average exchange rate of late August 2008.



Liabilities	Category	Unit: million yen	US \$ 1=¥109*
	Fixed liabilities	97,422	893.78
	Contra accounts for services & assets	56,906	522.07
	Long-term loans payable to the Center for National University Finance and Management	24,291	222.85
	Long-term loans payable	950	8.72
	Long-term accrued amount payable	15,226	139.69
	Other fixed liabilities	49	0.45
	Current liabilities	46,694	428.39
	Grants for administrative services carry over	3,338	30.62
	Blance of donations	12,884	118.20
	Funds for research & other entrusted activities	1,099	10.08
	Current portion of loans payable to the Center for National University Finance and Management	3,506	32.17
	Current portion of long-term loans payable	59	0.54
	Accrued amount payable	23,356	214.28
	Other current liabilities	2,452	22.50
	Total liabilities	144,116	1,322.17

Net Assets	Category	Unit: million yen	US \$ 1=¥109*
	Capital	244,530	2,243.39
	National government investments	244,530	2,243.39
	Capital surplus	8,009	73.48
	Capital surplus	46,636	427.85
	Accumulated depreciation charged to capital surplus	▲ 38,620	▲ 354.31
	Accumulated impairment loss charged to capital surplus	▲ 7	▲ 0.06
	Retained earnings	20,403	187.18
	Accumulated reserve for education and research	6,563	60.21
	Accumulated reserve	7,588	69.61
	Unappropriated retained earnings	6,252	57.36
	Net assets	272,942	2,504.05
	Total liabilities & net assets	417,058	3,826.22

* Calculations based on average exchange rate of late August 2008.



Statement of Income

2007 Fiscal Year

Ordinary Expenses	Category	Unit: million yen	US \$ 1=¥109*
	Operating expenses	117,316	1,076.29
	Education expenses	5,779	53.02
	Research expenses	17,111	156.98
	Expenses for medical practice	15,971	146.52
	Support for education & research	2,825	25.92
	Expenses for entrusted activities	14,520	133.21
	Personnel expenses	61,110	560.64
	Management costs	4,050	37.16
	Finance costs	1,526	14.00
	Miscellaneous losses	10	0.09
	Total ordinary expenses	122,902	1,127.54

Ordinary Revenues	Category	Unit: million yen	US \$ 1=¥109*
	Revenue from grants for administrative services	58,075	532.80
	Revenues from tuition and fees	13,720	125.87
	Hospital revenues	24,712	226.72
	Revenues from entrusted activities	15,126	138.77
	Revenues from donations	4,168	38.24
	Contra account for services & assets	5,848	53.65
	Other revenues	7,212	66.16
	Total ordinary revenues	128,861	1,182.21

Ordinary profit	5,959	54.67
Extraordinary loss	114	1.04
Extraordinary income	10	0.09
Withdrawals from the accumulated reserve for education & research	397	3.64
Total income for the year	6,252	57.36

* Calculations based on average exchange rate of late August 2008.



Industry-Academia-Collaboration

Invention Disclosure

FY	Number of Invention Disclosure Forms Submitted
2002	64
2003	169
2004	524
2005	454
2006	392
2007	390

Fiscal Year (FY): April 1-March 31

Patent

FY	DOMESTIC		FOREIGN	
	Number of Patent Applications	Number of Patents Issued	Number of Patent Applications ¹	Number of Patents Issued
2002	24 (7)	4 (2)	9 (3)	2 (0)
2003	114 (61)	6 (2)	25 (8)	1 (0)
2004	292 (153)	2 (0)	71 (28)	0 (0)
2005	324 (173)	14 (2)	212 (104)	0 (0)
2006	318 (197)	14 (7)	234 (130)	9 (6)
2007	262 (180)	20 (12)	555 ² (347)	9 (8)
Accumulative Total		98 (30)		47 (30)

Fiscal Year (FY): April 1-March 31

The Number of joint applications or co-owned patents is shown in brackets

¹ Including patent applications under the PCT or EPC

² Of these, 306 are applications filed in accordance to the EPC (9 applications which could be applicable to 34 designated countries)

Exploitation of Intellectual Property

FY	PATENTS		COPYRIGHTS ¹		RESEARCH MATERIALS		TOTAL
	Number of Licenses ²	Revenue ³	Number of Licenses ²	Revenue ³	Number of Licenses ²	Revenue ³	Revenue ³
2002	0	0	0	0	0	0	0
2003	0	0	0	0	0	0	0
2004	0	0	4	5,380	1	12,329	17,709
2005	15	9,814	12	12,965	0	0	22,779
2006	19	17,002	7	6,453	1	10,500	33,955
2007	34	23,694	7	12,904	15	19,242	55,840

Fiscal Year (FY): April 1-March 31

¹ Databases and computer programs or digital content (except research papers, books, or reports)

² Including assignment

³ Unit/thousand yen

Collaborative Research

	Number of Cases	Revenue ¹
2002	227	983,851
2003	299	1,327,414
2004	378	1,726,933
2005	504	2,174,118
2006	643	2,987,601
2007	766	3,469,663

Fiscal year: April 1-March 31

¹ Unit/thousand yen

Sponsored Research

	Number of Cases	Revenue ¹
2002	486	4,179,101
2003	527	6,161,347
2004	607	8,140,972
2005	664	9,282,207
2006	707	11,795,015
2007	698	10,903,624

Fiscal year: April 1-March 31

¹ Unit/thousand yen



ACADEMIC EXCHANGE MEMORANDA

Kyoto University has concluded general memoranda for academic exchange and cooperation with 80 universities, two university alliances and one consortium of 18 universities and institutes, as indicated below.

(As of October 1, 2008)

Countries & Regions	Universities	year of conclusion	☆
Australia	University of Queensland	1981	
	University of Melbourne	1997	☆
	University of New South Wales	1998	☆
	University of Sydney	1999	☆
	Australian National University	2008	☆
Austria	University of Vienna	1993	☆
Belgium	Universit catholique de Louvain	1997	☆
Canada	University of Toronto	1991	☆
	La Conférence des Recteurs et des Principaux des Universités du Québec	1994	☆
	University of Waterloo	2003	☆
China, P. R.	Northwest University (西北大学)	1980	
	Wuhan University (武漢大学)	1980	☆
	Peking University (北京大学)	1983	☆
	Tsinghua University (清華大学)	1998	☆
	Fudan University (復旦大学)	2002	☆
	Zhejiang University (浙江大学)	2003	☆
	University of Science and Technology of China (中国科学技术大学)	2005	
	Hong Kong University of Science and Technology (香港科技大学)	2005	☆
	Nanjing University (南京大学)	2006	☆
	Shanghai Jiao Tong University (上海交通大学)	2008	
Czech	Xi'an Jiaotong University (西安交通大学)	2008	
Czech	Charles University	1990	
France	Université de Paris 7	1979	
	Union des Universités de Strasbourg (Strasbourg 1 - Université Louis Pasteur, Strasbourg 2 - Université Marc Bloch, Strasbourg 3 - Université Robert Schuman)	1996	☆
	Le Consortium des universités de Grenoble (Grenoble I - Université Joseph Fourier, Grenoble II - Université Pierre Mendès France, Grenoble III - Université Stendhal and Institut National Polytechnique de Grenoble)	2000	☆
Germany	Free University of Berlin	1984	☆
	Ludwig-Maximilians-University of Munich	1989	☆
	Rhenish Friedrich-Willhelm University of Bonn	1990	☆
	Rupert Charles University of Heidelberg	1990	☆
	Humboldt University Berlin	1998	☆
	Technische Universität München	2006	☆
Indonesia	Bandung Institute of Technology	2006	
	Indonesian Institute of Sciences (LIPI)	2006	
	University of Indonesia	2008	
Israel	Tel Aviv University	1999	☆
Italy	University of Siena	1989	
	University of Bologna	1995	
	University of Pisa	2001	
Korea, R.	Kyungpook National University (慶北大学校)	1984	☆
	Seoul National University (ソウル大学校)	1991	☆
	Yonsei University (延世大学校)	1998	☆
	Korea University (高麗大学校)	2002	☆
	Korea Advanced Institute of Science and Technology (韓国科学技術院)	2005	
	Pohang University of Science and Technology (浦項工科大学校)	2007	☆
Laos	National University of Laos	2002	

Countries & Regions	Universities	year of conclusion	☆
Malaysia	University of Malaya	2008	
Mexico	University of Guadalajara	1983	☆
Netherlands	Leiden University	1997	☆
	University of Utrecht	1997	☆
New Zealand	University of Auckland	1997	☆
Russia	Moscow M. V. Lomonosov State University	1987	
Singapore	National University of Singapore	1999	☆
Sudan	University of Khartoum	2001	
Switzerland	Swiss Federal Institute of Technology Zurich	1989	
	University of Lausanne	1997	☆
Sweden	Stockholm University	1997	☆
	Uppsala University	1997	☆
	Royal Institute of Technology	2005	☆
Taiwan	National Taiwan University (国立台湾大学)	2005	☆
	National Tsing Hua University (国立清華大学)	2006	☆
Thailand	Kasetsart University	1984	☆
	Thammasat University	2005	☆
	Chulalongkorn University	2005	☆
U. K.	University of Sussex	1989	☆
	University of Oxford	1991	
	University of Cambridge	1997	
	University of Nottingham	1999	
	University of Edinburgh	2005	
	University of Sheffield	2006	☆
	University of Manchester	2006	☆
U. S. A.	Wayne State University	1985	
	Stanford University	1989	
	University of California	1990	☆
	Polytechnic University	1990	
	Brown University	1992	
	George Washington University	1998	☆
	Tufts University	1998	
	University of Pennsylvania	1999	☆
	University of Hawai'i	2003	☆
University of Michigan	2003		
Vietnam	Vietnam National University, Hanoi	2007	
	Hue University	2007	
Others	United Nations University (国際連合大学)	2005	

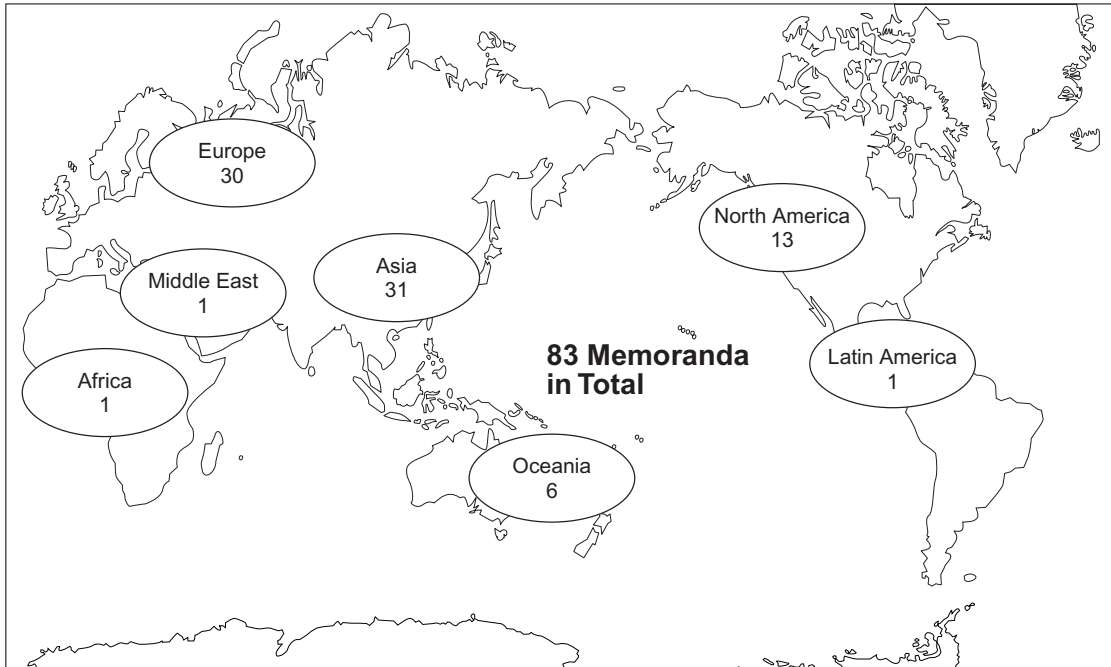
☆General Memorandum and Student Exchange Agreement

Universities with Student Exchange Agreement Only:
University of Hong Kong (2007)
Chinese University of Hong Kong (2007)

Individual faculties, graduate schools, institutes and centers of Kyoto University have also concluded agreements with 309 institutions abroad.



Distribution Map of Counterpart Universities and Consortia



RESEARCHERS COMING FROM ABROAD

(April 2007–March 2008)

Countries & Regions		Number of Researchers
ASIA	Bangladesh	14
	Cambodia	2
	China, P.R.	363
	India	120
	Indonesia	92
	Korea, R.	419
	Laos	3
	Malaysia	69
	Mongolia	1
	Myanmar	10
	Nepal	7
	Pakistan	1
	Philippines	10
	Singapore	28
	Sri Lanka	1
	Taiwan	153
Thailand	90	
Viet Nam	26	
NORTH AMERICA	Canada	96
	U.S.A.	666
LATIN AMERICA	Argentina	5
	Bolivia	1
	Brazil	18
	Chile	2
	Colombia	1
	Ecuador	1
	Honduras	1
	Mexico	66
	Nicaragua	2
	Peru	1
Venezuela	4	
EUROPE	Austria	27
	Azerbaijan	1
	Belgium	9
	Bulgaria	3
	Croatia	1
	Czech	34
	Denmark	9
	Estonia	3
	Finland	16
	France	191
	Germany	190

Countries & Regions		Number of Researchers
EUROPE	Greece	12
	Hungary	16
	Iceland	2
	Italy	71
	Latvia	1
	Lithuania	2
	Netherlands	39
	Norway	10
	Poland	14
	Portugal	9
	Romania	1
	Russia	81
	Serbia	2
	Slovakia	3
	Slovenia	3
	Spain	46
	Sweden	33
	Switzerland	36
	U.K.	139
	Ukraine	6
OCEANIA	Australia	63
	Fiji	2
	New Zealand	9
MIDDLE EAST	Iran	3
	Iraq	1
	Israel	17
	Jordan	1
	Saudi Arabia	1
	Turkey	23
	United Arab Emirates	2
AFRICA	Algeria	1
	Botswana	1
	Congo, D.R.	1
	Egypt	10
	Kenya	4
	Liberia	1
	Madagascar	1
	Mauritius	2
	Nigeria	1
	South Africa	3
Tanzania	1	
Total		3,431

The number of researchers coming from abroad doing research at Kyoto University, irrespective of their length of stay.



RESEARCHERS GOING ABROAD

(April 2007–March 2008)

Countries & Regions		Number of Researchers
ASIA	Bangladesh	25
	Bhutan	3
	Brunei	3
	Cambodia	11
	China, P.R.	553
	East Timor	2
	India	84
	Indonesia	180
	Korea, R.	418
	Laos	30
	Malaysia	118
	Mongolia	9
	Myanmar	8
	Nepal	17
	Pakistan	1
	Philippines	17
	Singapore	87
	Sri Lanka	2
	Taiwan	166
Thailand	273	
Viet Nam	98	
NORTH AMERICA	Canada	138
	U.S.A.	1,100
LATIN AMERICA	Argentine	2
	Bolivia	2
	Brazil	13
	Chile	5
	Cuba	1
	El Salvador	1
	Honduras	1
	Mexico	19
	Panama	1
	Peru	11
	Uruguay	1
Venezuela	2	
EUROPE	Austria	71
	Belgium	37
	Bosnia and Herzegovina	1
	Bulgaria	8
	Croatia	6
	Czech	22
	Denmark	26
	Estonia	4
	Finland	25
	France	290
	Germany	262
	Greece	46
	Hungary	18
	Iceland	1
	Ireland	10
	Italy	192
	Kazakhstan	4
	Kyrgyz	1
	Latvia	3
	Lithuania	1
	Malta	1
	Monaco	2
	Netherlands	72
Norway	11	
Poland	37	
Portugal	34	

Countries & Regions		Number of Researchers	
EUROPE	Romania	2	
	Russia	49	
	Serbia	2	
	Slovakia	3	
	Slovenia	7	
	Spain	71	
	Sweden	40	
	Switzerland	58	
	Tajikistan	1	
	Turkmenistan	1	
	U.K.	212	
	Ukraine	2	
	Uzbekistan	6	
OCEANIA	Australia	99	
	Fiji	2	
	Kiribati	2	
	Micronesia	1	
	New Zealand	12	
	Papua New Guinea	1	
	Solomon Islands	2	
	Tonga	1	
	Afghanistan	1	
	Iran	10	
MIDDLE EAST	Israel	6	
	Jordan	2	
	Kuwait	2	
	Lebanon	2	
	Qatar	1	
	Saudi Arabia	1	
	Turkey	19	
	United Arab Emirates	4	
	AFRICA	Botswana	1
		Burkina Faso	1
Cameroon		4	
Comoros		1	
Congo, D.R.		2	
Congo, R.		2	
Egypt		4	
Ethiopia		8	
Gabon		1	
Ghana		3	
Guinea		8	
Kenya		13	
Lesotho		2	
Madagascar		6	
Malawi		2	
Mali		1	
Morocco		3	
Namibia		3	
Niger		3	
Nigeria		1	
Rwanda		1	
South Africa		9	
Sudan		1	
Tanzania	15		
Tunisia	3		
Uganda	11		
Zambia	15		
Zimbabwe	1		
Total		5,334	

The number of researchers going abroad to do research, irrespective of their length of stay.

STUDENTS FROM ABROAD

(As of May 1, 2008)

Classification Countries & Regions		Under graduates	Auditors	Graduates				Research Students etc*	Total
				Master's Course	Doctoral Course	Professional Course	Auditors		
ASIA	Bangladesh	1		1	11			1	14
	Bhutan				2				2
	Cambodia	1			3	1			5
	China, P.R.	74	2	143	167	22	7	113	528
	India			1	11			3	15
	Indonesia	2		8	25			2	37
	Korea, R.	34	11	43	91	5	2	23	209
	Laos			1	3				4
	Malaysia	1		11	10			4	26
	Mongolia	10		1	3				14
	Myanmar			2	5	1			8
	Nepal				13			1	14
	Pakistan				1		1	1	3
	Philippines			6	9			5	20
	Singapore	2	1		1				4
	Sri Lanka			2	4				6
	Taiwan	1	2	17	26	8	1	16	71
	Thailand	4	3	8	35	1		8	59
Vietnam	5		9	16	2		4	36	
NORTH AMERICA	Canada			1	4			1	6
	U.S.A		2	6	4		2	8	22
LATIN AMERICA	Argentina	1		1	4			1	7
	Bolivia				1				1
	Brazil			6	9			1	16
	Chile				2				2
	Colombia			1	6				7
	Guatemala			1					1
	Honduras				1				1
	Jamaica			1					1
	Mexico			3	1			4	8
	Peru				2				2
	Venezuela			2					2
EUROPE	Albania							1	1
	Austria		1					1	2
	Belgium							2	2
	Bulgaria	1		2	1			2	6
	Cyprus				1				1
	Czech				2				2
	Finland						1	1	2
	France		4	1	9		2	3	19
	Germany		7		4		2	5	18
	Greece			1	1				2
	Hungary	1			1			3	5
	Italy						1		1
Kyrgyz	1						1	2	

*includes Research Fellows

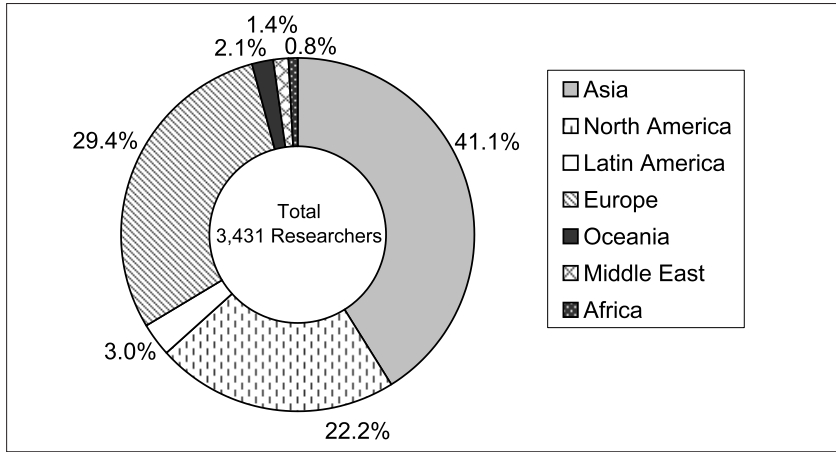


Classification Countries & Regions		Under graduates	Auditors	Graduates				Research Students etc*	Total
				Master's Course	Doctoral Course	Professional Course	Auditors		
EUROPE	Luxembourg							1	1
	Macedonia							1	1
	Netherlands		2				1	3	6
	Poland				5			3	8
	Portugal			1					1
	Romania			1	1				2
	Russia			3	6			4	13
	Serbia	1							1
	Slovakia			1					1
	Spain				1		1	1	3
	Sweden		5						5
	Switzerland		2		1			1	4
	Ukraine	1			1			2	4
	U.K.		1	1	4			3	9
Uzbekistan			1				1	2	
OCEANIA	Australia			2	2				4
	New Zealand				3			1	4
	Samoa							1	1
MIDDLE EAST	Afghanistan			2					2
	Bahrain			1					1
	Iraq							1	1
	Iran				5		1	1	7
	Israel		2	1	3			1	7
	Jordan							2	2
	Lebanon							1	1
	Oman				1				1
	Palestine				1				1
	Syria				1				1
	Turkey			1	2				3
	Yemen							1	1
AFRICA	Algeria							1	1
	Cameroon							1	1
	Egypt				13			1	14
	Ethiopia				2				2
	Ghana				1				1
	Kenya	1		1	3			1	6
	Madagascar							1	1
	Mali				1				1
	Mozambique							1	1
	Nigeria			1	1				2
	South Africa			1	1				2
	Sudan				1				1
	Tanzania				2				2
Tunisia			1	1			2	4	
Zambia						1	1	2	
Total		142	45	298	552	41	22	253	1,353



EXCHANGE OF RESEARCHERS AND STUDENTS

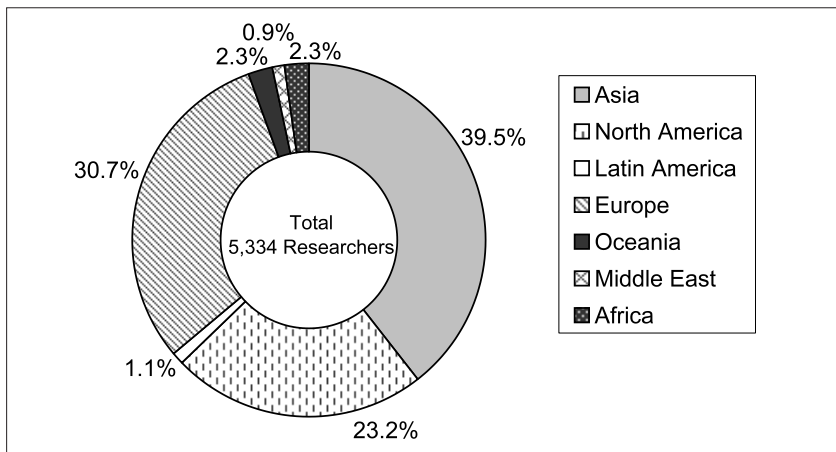
Researchers Coming from Abroad (April 2007–March 2008)



Top 5 countries

U.S.A.	666
Korea, R.	419
China, P.R.	363
France	191
Germany	190

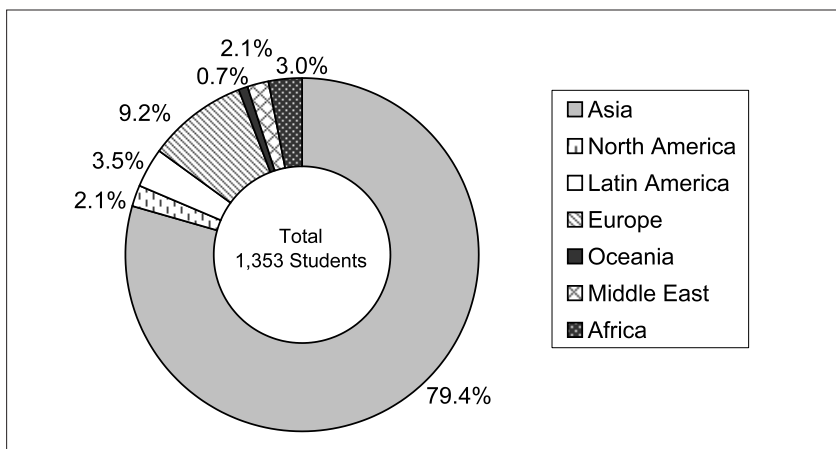
Researchers Going Abroad (April 2007–March 2008)



Top 5 countries

U.S.A.	1,100
China, P.R.	553
Korea, R.	418
France	290
Thailand	273

Students from Abroad (As of May 1, 2008)



Top 5 countries and regions

China, P.R.	528
Korea, R.	209
Taiwan	71
Thailand	59
Indonesia	37

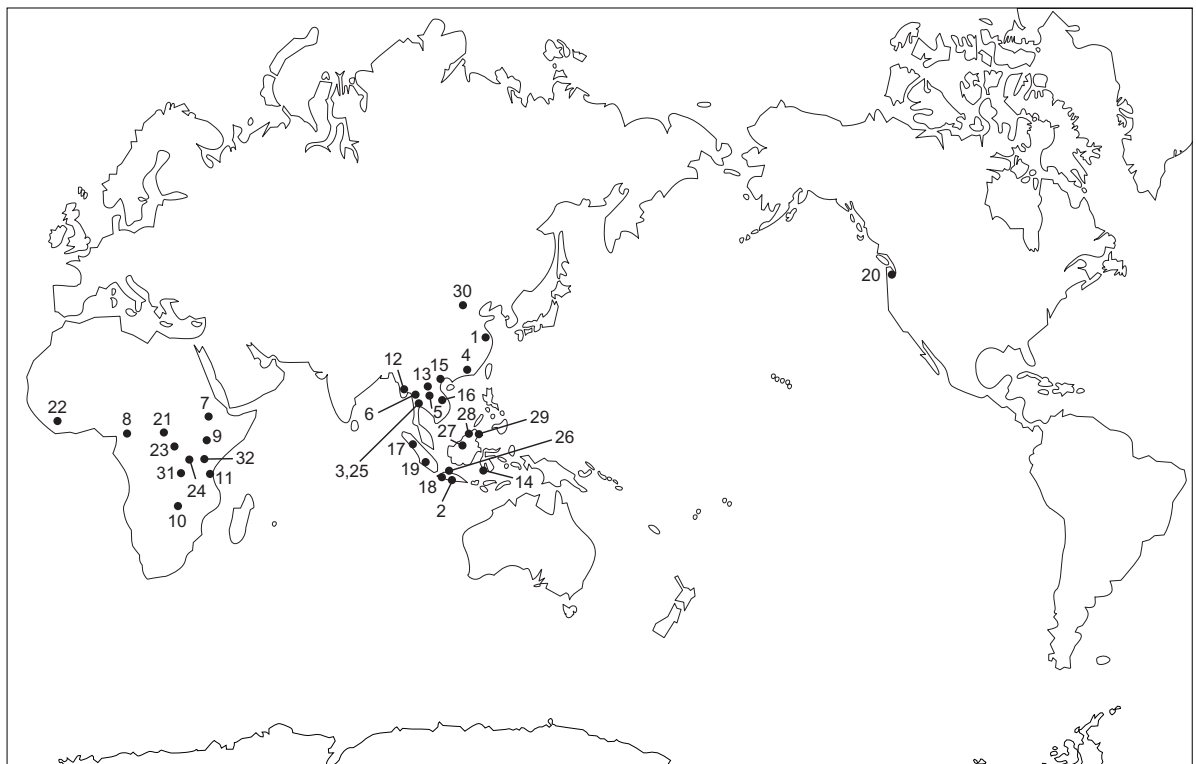


LIST OF OVERSEAS STATIONS

(As of May 1, 2008)

	Departments/Centers	Name	Place/Country	Year Established
1	Graduate School of Economics	Branch Office of Shanghai Center for Economic Research	Shanghai, China, P.R.	2003
2	Graduate School of Science	KAGI21 Satellite Office at Institut Teknologi Bandung	Bandung, Indonesia	2003
3	Graduate School of Science	KAGI21 Satellite Office at Chulalongkorn University	Bangkok, Thailand	2004
4	Graduate School of Engineering	Cooperative Research and Education Center for Environmental Technology at Tsinghua University	Schenzhen, China, P.R.	2005
5	Graduate School of Agriculture	Modeling Agricultural Productivity in Northeast Thailand	Khon Kane, Thailand	1996
6	Graduate School of Energy Science/Institute of Advanced Energy/Research Institute for Sustainable Humanosphere	21COE Thai Research Station Collaborative Research Laboratory	Pathumthani, Thailand	2003
7	Graduate School of Asian and African Area Studies	Ethiopia Field Station	Addis Ababa, Ethiopia	2003
8	Graduate School of Asian and African Area Studies	Cameroon Field Station	Ndongo Village, Cameroon	2003
9	Graduate School of Asian and African Area Studies	Nairobi Field Station	Nairobi, Kenya	2003
10	Graduate School of Asian and African Area Studies	Zambia Field Station	Lusaka, Zambia	2003
11	Graduate School of Asian and African Area Studies	Tanzania Field Station	Dar es Salaam, Tanzania	2003
12	Graduate School of Asian and African Area Studies/Center for Southeast Asian Studies	Yangon Field Station	Yangon, Myanmar	2003
13	Graduate School of Asian and African Area Studies/Center for Southeast Asian Studies	Vientiane Field Station	Vientiane, Laos	2003
14	Graduate School of Asian and African Area Studies/Center for Southeast Asian Studies	Makassar Field Station	Makassar, Indonesia	2003
15	Graduate School of Global Environmental Studies	Contact Office of Research and Education of Graduate School of Global Environmental Studies	Hanoi, Vietnam	2005
16	Graduate School of Global Environmental Studies	Contact Office of Research and Education of Graduate School of Global Environmental Studies	Hue, Vietnam	2006
17	Research Institute for Sustainable Humanosphere	Equatorial Atmosphere Radar	Bukittinggi, Indonesia	2001
18	Research Institute for Sustainable Humanosphere	RISH-RDUB Satellite Office	Bogor, Indonesia	2004
19	Research Institute for Sustainable Humanosphere	MHP Acacia Research Office	Sumatra, Indonesia	2005
20	Disaster Prevention Research Institute	Seattle Satellite Office	Seattle, USA	1996
21	Primate Research Institute	Research Project on bonobos in the Luo Reserve	Djolu, Democratic Republic of the Congo	1973

	Departments/Centers	Proper Name	Place/Country	Year Established
22	Primate Research Institute	Bossou-Nimba Research Station	Bossou, Guinea	1976
23	Primate Research Institute	Kalinzu Forest Research Project by the Primate Research Institute	Bushenyi, Uganda	1997
24	Primate Research Institute	Rubondo Island Field Station	Rubond, Tanzania	2000
25	Center for Southeast Asian Studies	Bangkok Liaison Office	Bangkok, Thailand	1963
26	Center for Southeast Asian Studies	Jakarta Liaison Office	Jakarta, Indonesia	1970
27	Center for Ecological Research	Field Station for Tropical Forest and Biodiversity Studies in Lambir Hills National Park	Miri, Malaysia	1992
28	Center for Ecological Research	Japanese Research-Team Laboratory, Kinabalu Park Headquarters	Kota Kinabalu, Malaysia	1995
29	Center for Ecological Research	Japanese Research-Team Laboratory, Deramakot Forest Reserve	Sandakan, Malaysia	2003
30	Innovative Collaboration Center	Kyoto University Liaison Office at Tsinghua University	Beijing, China P.R.	2006
31	Wildlife Research Center	Kyoto University African Ape Expedition	Kidoma, Tanzania	1965
32	Wildlife Research Center	African Anthropological and Biological Field Research Center	Arusha, Tanzania	2006



UNIVERSITY FACILITIES

INTERNATIONAL HOUSES

In order to facilitate international education and research exchanges, Kyoto University has established three International Houses: housing facilities for students and researchers from overseas.

The International Houses are not simply housing facilities; they also serve as sites for interaction and exchange between the international students and researchers, university associates and the people of Kyoto.

The three Kyoto University International Houses are located in Shugakuin, Uji, and Ohbaku.

KYOTO UNIVERSITY LIBRARY

The Kyoto University Library was established over 100 years ago in 1899. The library is continually expanding its collection, which currently stands at approximately 824,000 books and 24,500 periodicals. In addition to regular printed material, the library also acquires other types of publications and media such as e-journals, data bases and audiovisual materials (available in the Media Commons), ensuring that it continues to be an up-to-date store of academic knowledge. Various services are also offered online.

(The total collection of all libraries on Kyoto University's campuses, including faculty and departmental libraries, amounts to 6,256,000 books and 89,000 periodicals).

UNIVERSITY HOSPITAL

Kyoto University Hospital was established in 1899 as a part of Kyoto Imperial University. With the incorporation of the Chest Diseases Research Institute in April of 1998, the University Hospital became a general hospital with multiple departments, offering top-level medical services to people in and around Kyoto. The hospital currently has 1,182 beds. As of 2007, inpatients number approximately 363,000 and outpatients approximately 613,000.

In April 2001, the Translational Research Center was established to undertake research into fundamental transplants research in humans. In January 2003, the Post Graduate Clinical Education Center was established for medical trainees to broaden their understanding of primary medical care, and to acquire and develop a holistic attitude toward the treatment of patients.

In April 2005, the Post Graduate Clinical Education Center became the Integrated Clinical Education Center, a center which trains and educates not only clinicians and dental practitioners, but also nurses, pharmacists and other medical professionals.

The hospital began a program of living-donor liver transplantations in 1990. As of June 2004, over 1,000 living-donor liver transplantations have been performed, setting a world record. About half of all such transplantation operations in Japan have been carried out at Kyoto University Hospital, making it a world leading facility in this field.



JAPANESE NOBEL PRIZE LAUREATES

Year conferred	Field	Name	Alma Mater	Position when the prize was conferred
2002	Chemistry	Kouichi Tanaka	Tohoku University	Shimadzu Corporation
	Physics	Masatoshi Koshihara	The University of Tokyo	Emeritus Professor, the University of Tokyo
2001	Chemistry	Ryoji Noyori	Kyoto University	Professor, Nagoya University
2000	Chemistry	Hideki Shirakawa	Tokyo Institute of Technology	Emeritus Professor, University of Tsukuba
1994	Literature	Kenzaburo Oe	The University of Tokyo	Novelist
1987	Physiology-Medicine	Susumu Tonegawa	Kyoto University	Professor, Massachusetts Institute of Technology
1981	Chemistry	Kenichi Fukui	Kyoto University	Professor, Kyoto University
1974	Peace	Eisaku Sato	The University of Tokyo	Former Prime Minister
1973	Physics	Reona Ezaki	The 3rd Higher School/ The University of Tokyo	Senior Researcher, IBM Watson Research Center
1968	Literature	Yasunari Kawabata	The University of Tokyo	Novelist
1965	Physics	Shin-iti Tomonaga	Kyoto University	Professor, Tokyo University of Education
1949	Physics	Hideki Yukawa	Kyoto University	Professor, Kyoto University

Note: Dr. Yukawa of Kyoto University was the first recipient of the Nobel Prize in Japan.

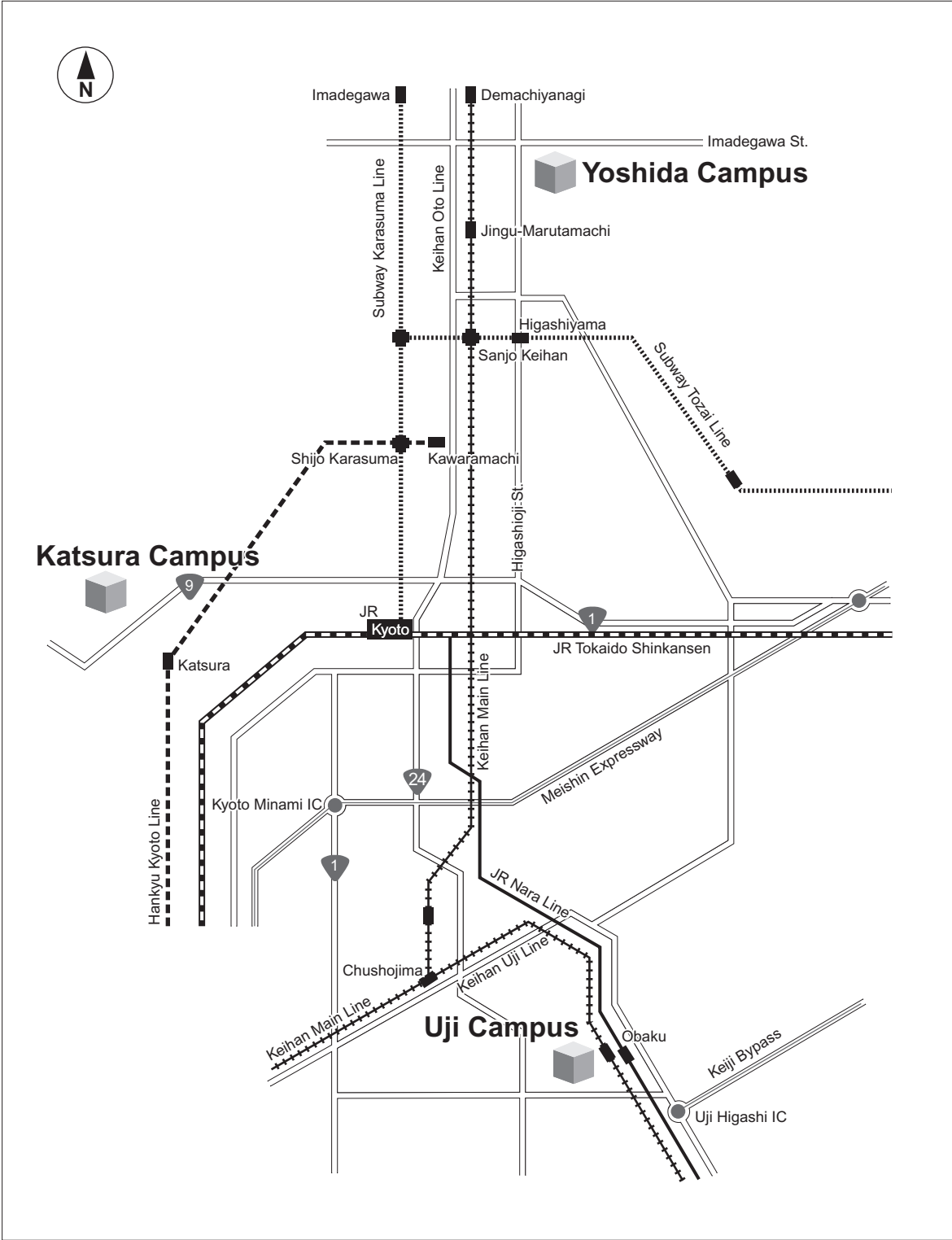
As of June 2006, out of the 12 Nobel Prize laureates, 5 are graduates from Kyoto University.



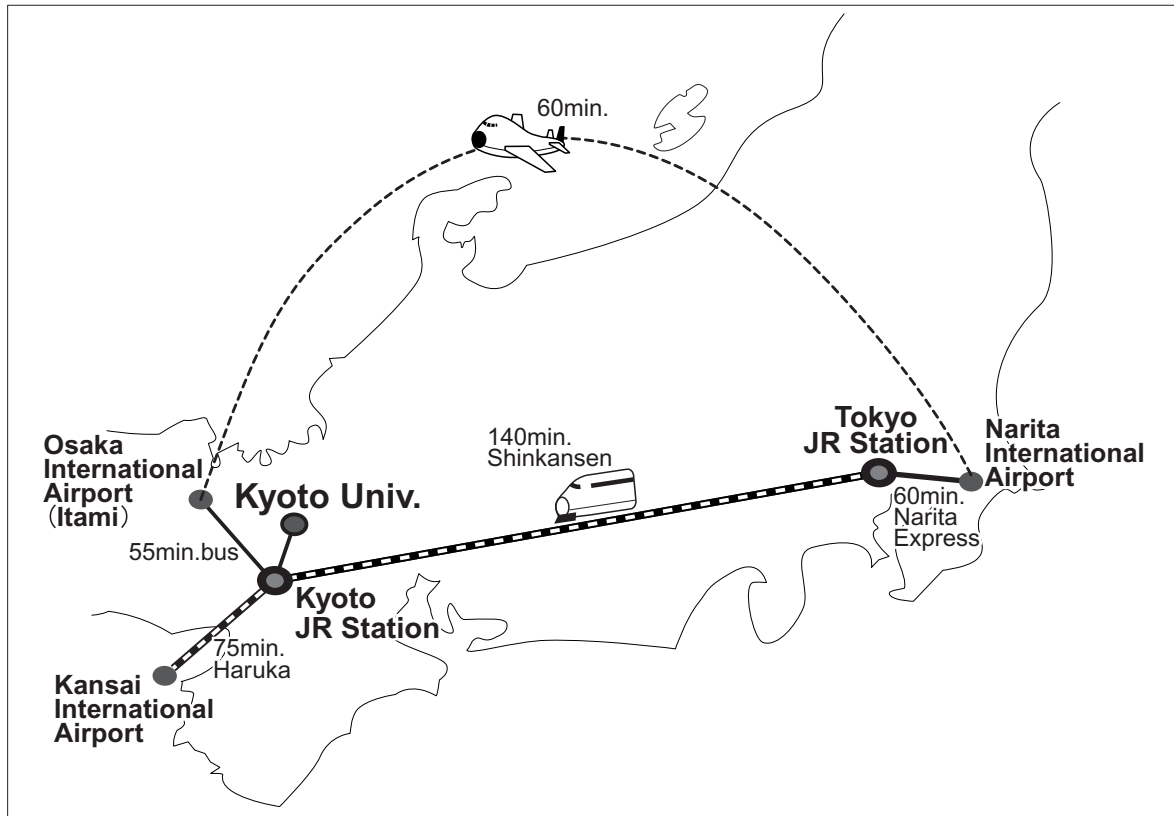
KYOTO UNIVERSITY INTERNATIONAL SYMPOSIA

	Date	Place	Title	Remarks
1	Jan. 13, 2001	Santa Clara, CA, USA	Network and Media Computing	
2	Nov. 28, 2001 Nov. 30, 2001	London, Edinburgh, UK	The Changes in the Japanese Economy Facing the New Century	Jointly organized with the University of London and the University of Edinburgh
3	Sept. 3-4, 2002	Montreal, CANADA	Post-Petrofuels in the 21st Century – Prospects in the Future of Biomass Energy	
4	Dec. 6-7, 2003	Ann Arbor, MI, USA	Self, Cognition, and Emotion	Jointly organized with the University of Michigan
5	Jan. 27-29, 2005	SINGAPORE	Regulation of Cell Fate and Cell Function	Jointly organized with the National University of Singapore
6	Oct. 8-9, 2005	Beijing, CHINA, P.R.	Plant Sciences in Japan and China – from Genomics to Breeding	Jointly organized with the Chinese Academy of Agricultural Sciences
7	Nov. 23-24, 2005	Bangkok, THAILAND	Coexistence with Nature in a ‘Glocalizing’ World – Field Science Perspectives	Jointly organized with Chulalongkorn University, Thammasat University, and Kasetsart University
8	Nov. 23-25, 2006	Bangkok, THAILAND	Towards Harmonious Coexistence within Human and Ecological Community on this Planet	
9	June. 22-23, 2007	Kyoto, JAPAN	Integrating Global Environmental Studies towards Human Security	
10	July. 26-28, 2007	Bandung, INDONESIA	Active Geosphere Science	Jointly Organized with Bandung Institute of Technology
11	Oct. 9-11, 2008	Shanghai, CHINA, P.R.	Frontier Bioscience in Modern Medicine	Special support from Fudan University
12	Dec. 5-6, 2008	Kyoto, JAPAN	Transforming Racial Images: Analyses of Representations	

CAMPUS MAP



HOW TO REACH KYOTO UNIVERSITY FROM AIRPORTS



From Kansai International Airport

Take the Airport Express “Haruka” train to JR Kyoto Station (75 min., ¥3,500). To reach Kyoto University (Yoshida Campus), take City Bus No.206 and get off at Kyodai-Seimon Mae bus stop (40 min. ¥220). Other methods of transport available include the shuttle bus (limousine bus), airport shuttles (shared ride taxis) and regular taxi cabs. Please refer to the websites below for further information.

Kansai International Airport Access Information:

<http://www.kansai-airport.or.jp/en/access/index.html>

Shuttle Bus:

<http://www.kansai-airport.or.jp/en/access/bus/index.html>

Airport Shuttles and Taxi Cabs:

<http://www.kansai-airport.or.jp/en/access/taxi/index.html>

From Narita International Airport

Take the “Narita Express” train (60 min., ¥3,000) to JR Tokyo Station. Take the “Shinkansen” (bullet train) to JR Kyoto Station, (140 min., ¥14,000). To reach Kyoto University (Yoshida Campus), take City Bus No.206 and get off at Kyodai-Seimon Mae bus stop (40 min. ¥220).

For further information on Narita International Airport:

http://www.narita-airport.or.jp/airport_e/

For further information on transportation to Kyoto University:

<http://www.kyoto-u.ac.jp/en/access>





CONTACT

For Researchers

International Affairs Division

Yoshida-Honmachi, Sakyo-ku, Kyoto 606-8501

Tel: +81-75-753-2047

Fax: +81-75-753-2042

E-mail: koryu52@mail.adm.kyoto-u.ac.jp

URL: <http://www.kyoto-u.ac.jp>

For Students

Foreign Student Division

Yoshida-Honmachi, Sakyo-ku, Kyoto 606-8501

Tel: +81-75-753-2543

Fax: +81-75-753-2562

E-mail: ryugak78@mail.adm.kyoto-u.ac.jp

URL: <http://www.kyoto-u.ac.jp>