

KYOTO UNIVERSITY

Facts and Figures 2019–2020



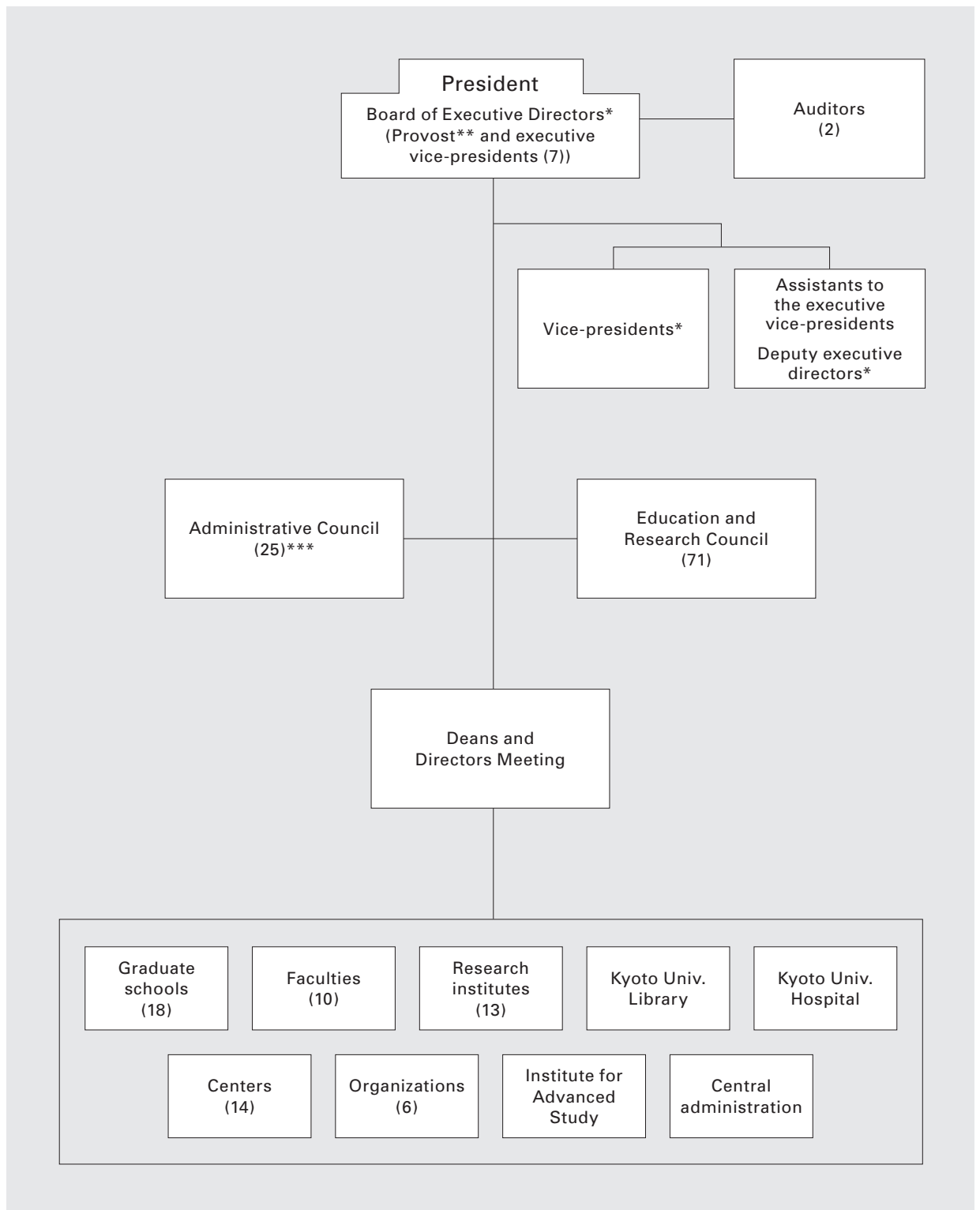
京都大学

Contents

Organization Structure	1
Staff and Students	2
Finance	3
Industry-Academia Collaboration	4
University Facilities	6
Academic Exchange Memoranda	7
Double/Joint Degrees	11
On-site Laboratory	12
Overseas Offices and Facilities	13
Researchers from Abroad	15
Researchers Going Abroad	16
Students from Abroad	17
Students Going Abroad	19

Organizational Structure

(As of Apr. 1, 2019)



* Each of the (executive) vice-presidents and deputy executive directors is in charge of a different area of university affairs.

** One executive vice-president concurrently serves as provost.

*** 25 members, 12 of whom are Kyoto University faculty and staff.

Staff and Students

University Faculty and Staff

(As of May 1, 2019)

Position	Number				Total	
	Permanent		Fixed Term			
President	1	-	-	-	1	-
Executive Directors	7	-	-	-	7	-
Auditors	2	-	-	-	2	-
Professors	988	(21)	106	(43)	1,094	(64)
Associate Professors	780	(60)	179	(36)	959	(96)
Senior Lecturers	176	(32)	87	(21)	263	(53)
Assistant Professors	714	(25)	352	(47)	1,066	(72)
Research Associates	2	-	-	-	2	-
Researchers(Non-teaching)	-	-	511	-	511	-
Non-teaching Staff	2799	(11)	587	(147)	3,386	(158)
Specialist Staff	8	-	69	-	77	-
Total	5,477	(149)	1,891	(294)	7,368	(443)

Number of international faculty and staff shown in parenthesis.

Enrollment

(As of May 1 of each year)

Year	Undergraduate	Graduate	Total
2019	13,094	9,535	22,629
2018	13,227	9,427	22,654
2017	13,360	9,338	22,698
2016	13,511	9,351	22,862
2015	13,569	9,216	22,785

Number of Graduates

Academic year (Apr. 1–Mar. 31)	Undergraduate	Graduate		Total
		Master's course	Doctoral course	
2018	2,941	2,288	701	5,930
2017	2,929	2,275	699	5,903
2016	2,963	2,250	665	5,878
2015	2,931	2,149	718	5,798
2014	2,885	2,218	723	5,826

Number of Degrees Conferred

Academic year (Apr. 1–Mar. 31)	Master's degree	Doctoral degree
2018	2,288	772
2017	2,275	777
2016	2,250	745
2015	2,149	803
2014	2,218	837

Number of Professional Degrees Conferred

Academic year (Apr. 1–Mar. 31)	Law school	School of public health	School of government	School of management	Total
2018	133	26	42	81	282
2017	129	34	45	78	286
2016	133	37	35	78	283
2015	139	34	36	86	295
2014	148	28	47	85	308

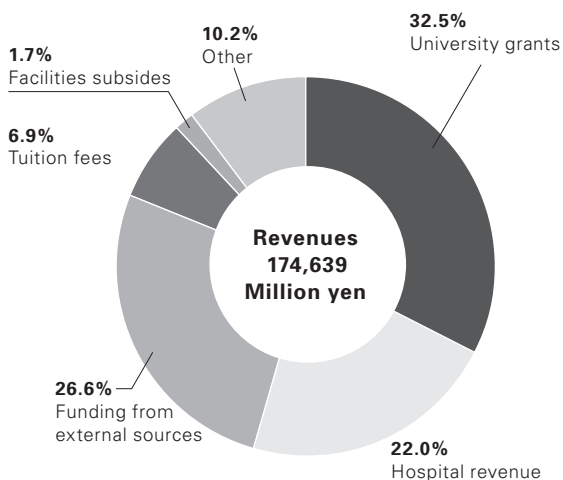
Finance

Financial Statement

*Calculations based on the exchange rate as of Mar. 29, 2019 (US\$1=¥ 109.99).

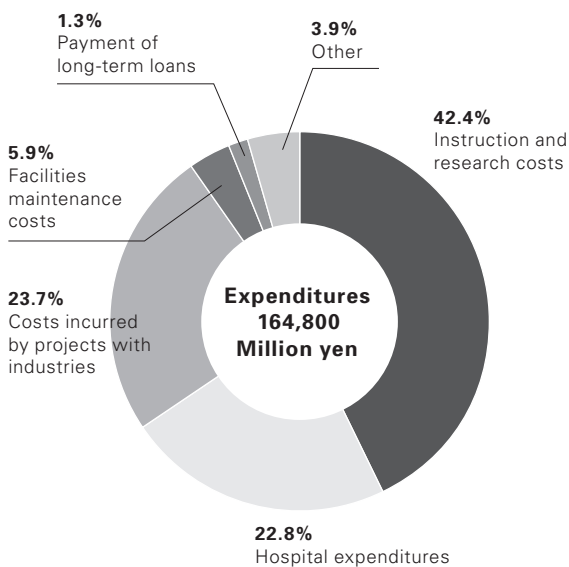
Revenues in Academic Year 2018 (Apr. 1–Mar. 31)

Category	Million yen	Million US\$
University grants	56,819	516.58
Facilities subsidies	3,009	27.36
Tuition fees	12,054	109.59
Hospital revenue	38,396	349.09
Funding from external sources	46,527	423.01
Other	17,834	162.14
Total	174,639	1587.77



Expenditures in Academic Year 2018 (Apr. 1–Mar. 31)

Category	Million yen	Million US\$
Instruction and research costs	69,787	634.48
Hospital expenditures	37,711	342.86
Facilities maintenance costs	9,688	88.08
Costs incurred by projects with industry	38,942	354.05
Payment of long-term loans	2,186	19.87
Other	6,486	58.97
Total	164,800	1498.32



Industry-Academia Collaboration

Invention Disclosure

Academic year (Apr. 1- Mar. 31)	Number of invention disclosure forms submitted
2018	382
2017	361
2016	370
2015	439
2014	412
2013	393
2012	443
2011	412

Patent Application and Acquisition

Academic year (Apr. 1–Mar. 31)	Domestic		Foreign	
	Number of patent applications	Number of patents issued	Number of patent applications ¹	Number of patents issued ²
2018	257 (181)	148 (107)	373 (233)	302 (157)
2017	230 (148)	137 (104)	380 (254)	277 (172)
2016	286 (201)	188 (142)	398 (290)	258 (170)
2015	315 (227)	161 (120)	360 (260)	184 (126)
2014	313 (222)	161 (127)	340 (229)	179 (113)
2013	290 (202)	156 (108)	331 (215)	101 (63)
2012	273 (187)	132 (98)	313 (192)	75 (43)
2011	237 (174)	109 (80)	298 (196)	79 (23)
2010	230 (169)	68 (38)	261 (150)	41 (25)

Number of joint applications or co-owned patents shown in parenthesis.

¹ Applications under the Patent Cooperation Treaty etc. count as one, regardless of the number of designated countries.

² The number of patent issued count as one for each country.

Current Number of Patents

(As of Mar. 31, 2019)

Domestic	Foreign
1,187 (796)	1,347 (842)

Number of joint applications or co-owned patents shown in parenthesis.

Utilization of Intellectual Property

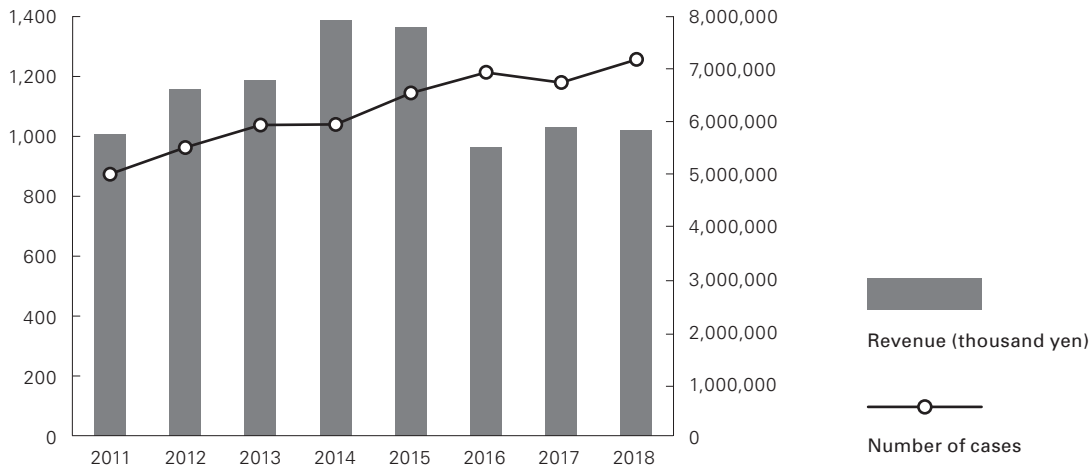
Academic year (Apr. 1–Mar. 31)	Patents		Copyrights ¹		Research materials		Total
	Number of licenses ²	Revenue (thousand yen)	Number of licenses ²	Revenue (thousand yen)	Number of licenses ²	Revenue (thousand yen)	Revenue (thousand yen)
2018	177	617,343	10	5,256	75	95,347	717,946
2017	179	640,395	11	2,639	69	60,862	703,896
2016	159	460,036	11	3,120	67	80,347	543,503
2015	144	371,154	11	2,780	53	14,768	388,702
2014	158	357,570	25	8,599	57	16,157	382,326
2013	139	310,530	22	4,515	56	11,901	326,946
2012	115	191,144	16	9,965	32	53,217	254,326
2011	101	184,594	14	4,172	25	18,801	207,567
2010	59	154,575	6	2,182	28	15,865	172,622

¹ Databases and computer programs or digital content (except research papers, books, or reports)

² Including assignment

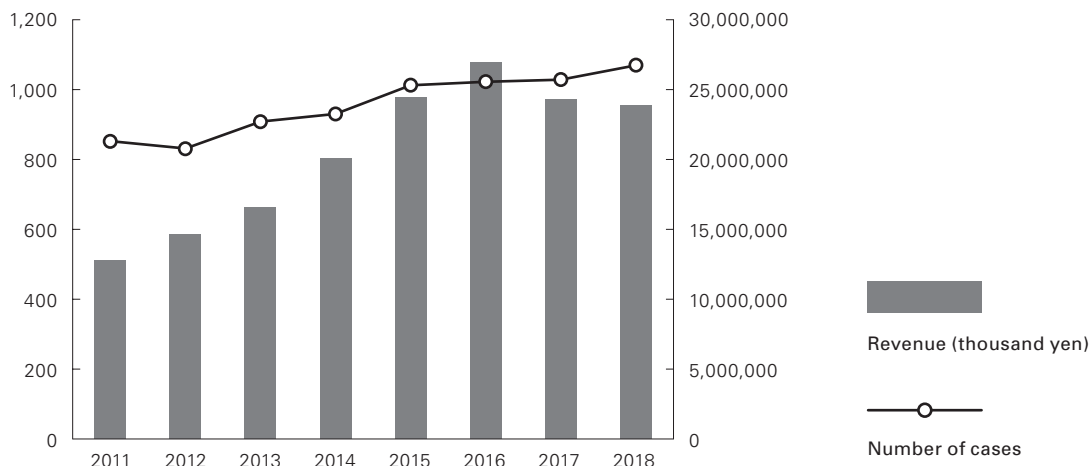
Collaborative Research

Academic year (Apr. 1- Mar. 31)	Number of cases	Revenue (thousand yen)
2018	1,227	5,857,873
2017	1,150	5,910,914
2016	1,184	5,540,024
2015	1,115	7,831,464
2014	1,010	7,966,350
2013	1,008	6,817,133
2012	933	6,649,823
2011	844	5,782,291



Sponsored Research

Academic year (Apr. 1- Mar. 31)	Number of cases	Revenue (thousand yen)
2018	1,064	23,695,518
2017	1,023	24,167,273
2016	1,017	26,770,423
2015	1,007	24,296,814
2014	925	19,979,788
2013	903	16,465,535
2012	826	14,574,873
2011	847	12,718,523



University Facilities

Library Collection

(As of Mar. 31, 2019)

	Number of books			Number of magazines and periodicals		
	Japanese	International	Total	Japanese	International	Total
Main university library	724,754	284,334	1,009,088	14,482	9,860	24,342
Other university Libraries and reference rooms	3,051,478	3,065,771	6,117,249	52,477	49,538	102,015
Combined total	3,776,232	3,350,105	7,126,337	66,959	59,398	126,357

Kyoto University Hospital

Academic Year 2018 (Apr. 1 - Mar. 31)

Number of beds	Number of inpatients	Number of outpatients
1,121	331,926	685,753

Number of Visitors to the Kyoto University Museum

Academic year 2018 (Apr. 1 - Mar. 31)

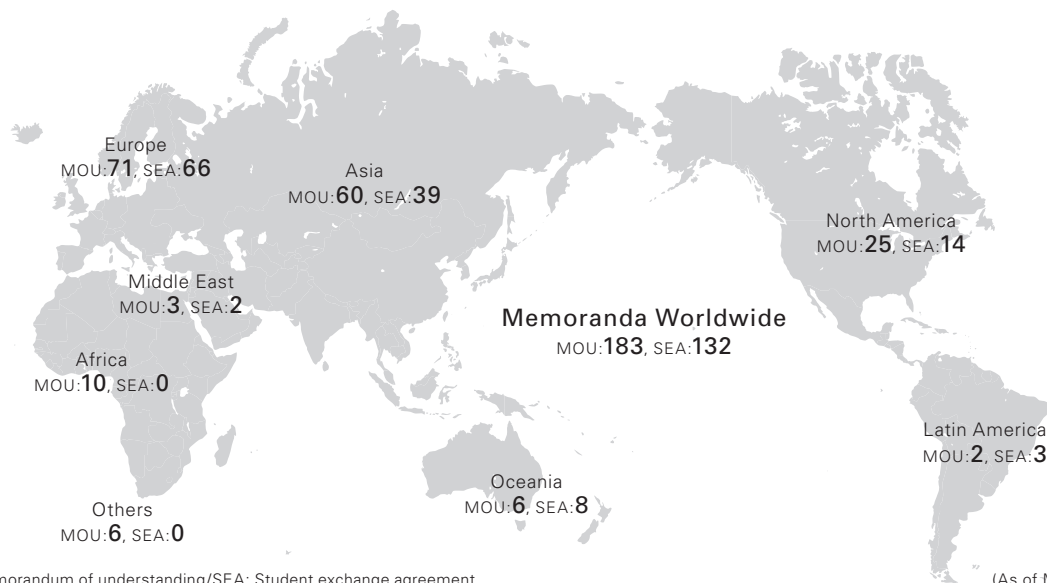
Paying visitors			Non-paying visitors	Total
Individuals	Groups	total		
13,615	798	14,413	24,271	38,684

Number of Visitors to the Seto Marine Biological Laboratory Aquarium

Academic year 2018 (Apr. 1 - Mar. 31)

Paying visitors			Non-paying visitors	Total
Individuals	Groups	total		
82,373	2,491	84,864	2,515	87,379

Academic Exchange Memoranda



MOU: Memorandum of understanding/SEA: Student exchange agreement

(As of May 1, 2019)

Country/region	Institution	MOU year of conclusion	SEA year of conclusion
ASIA			
Bhutan	Royal University of Bhutan	2013	-
Brunei	Universiti Brunei Darussalam	2014	2015
China	Northwest University	1980	-
	Wuhan University	1980	2007
	Peking University	1983	2008
	Tsinghua University	1998	2007
	Fudan University	2002	2007
	Zhejiang University	2003	2008
	University of Science and Technology of China	2005	-
	Hong Kong University of Science and Technology	2005	2006
	Nanjing University	2006	2007
	University of Hong Kong	-	2007
	Chinese University of Hong Kong	-	2007
	Shanghai Jiao Tong University	2008	2008
	Xi'an Jiaotong University	2008	2010
	Nankai University	-	2014
Hong Kong Polytechnic University	-	2017	
India	Banaras Hindu University	2015	2015
	Indian Institute of Technology Bombay (IITB)	2015	-
	Indian Institute of Technology Guwahati (IITG)	2016	2016
	Indian Institute of Technology Kanpur (IITK)	2016	-
	Indian Institute of Science	2017	-
North-Eastern Hill University	2018	-	
Indonesia	Institut Teknologi Bandung	2006	2016
	University of Indonesia	2008	2015
	Gadjah Mada University	2012	2016
	Bogor Agricultural University	2013	-
	Hasanuddin University	2014	-
	Indonesian Institute of Sciences (LIPI)	2014	-
	Center for International Forestry Research (CIFOR)	2016	-
Agency of Peatland Restoration (Badan Restorasi Gambut)	2016	-	
Laos	National University of Laos	2002	-
Malaysia	University of Malaya	2008	2015
	Universiti Teknologi Malaysia	2016	2017
	University Kebangsaan Malaysia	2017	-

Country/region	Institution	MOU year of conclusion	SEA year of conclusion
Myanmar	Mandalay Technological University	2013	-
	Yangon Technological University	2013	-
	University of Yangon	2015	-
	Yezin Agricultural University	2017	-
Nepal	Tribhuvan University	2015	-
Republic of Korea	Kyungpook National University	1980	1996
	Seoul National University	1991	1997
	Yonsei University	1998	1999
	Korea University	2002	2006
	Korea Advanced Institute of Science and Technology	2005	2017
	Pohang University of Science and Technology	2007	2007
Philippines	Konkuk University	2012	-
	University of the Philippines	2015	2015
Singapore	National University of Singapore	1999	1999
	Nanyang Technological University	2013	2014
Taiwan	National Taiwan University	2005	2005
	National Tsing Hua University	2006	2007
	National Cheng Kung University	2019	-
Thailand	Kasetsart University	1984	2001
	Chulalongkorn University	2005	2006
	Thammasat University	2005	2006
	Mahidol University	2014	-
	Chiang Mai University	2014	2014
	Asian Institute of Technology	2017	-
	National Science and Technology Development Agency	2018	-
Viet Nam	Vietnam National University, Hanoi	2007	2012
	Hue University	2007	2016
	Hanoi University of Science and Technology	2009	-
	University of Danang	2014	2016
OCEANIA			
Australia	University of Queensland	1981	2012
	University of Melbourne	1997	1997
	University of New South Wales	1998	1998
	University of Sydney	1999	1999
	Australian National University	2008	2008
	University of Adelaide	-	2018
New Zealand	University of Auckland	1997	1997
	University of Otago	-	2016
NORTH AMERICA			
Canada	University of Toronto	1991	1997
	La Conference des Recteurs et des Principaux des Universites du Quebec	1994	1998
	University of Waterloo	2003	2006
	McGill University	2014	2014
	University of British Columbia	2014	2015
	Concordia University	2014	2014
United States of America	Wayne State University	1985	-
	Stanford University	1989	-
	University of California	1990	-
	NYU Tandon School of Engineering (formerly Polytechnic University)	1990	-
	Brown University	1992	-
	George Washington University	1998	-
	Tufts University	1998	-
	University of Illinois at Urbana-Champaign	1999	-
	University of Pennsylvania	1999	-
	University of Hawai'i	2003	2005
	University of Michigan	2003	-
	University of Washington	2011	2011
	University of California, Davis	2011	-
	University of Wisconsin-Madison	-	2013
University of California, San Diego	2014	-	
Olin College of Engineering	2014	-	

Country/region	Institution	MOU year of conclusion	SEA year of conclusion
United States of America	University of Notre Dame Du Lac	2014	2016
	Massachusetts Institute of Technology	2015	-
	University of California, Berkeley	2015	-
	University of Texas at Austin	-	2015
	Rice University	2017	-
	University of Rochester	-	2018
	Arizona State University	-	2018
	University of California, Santa Cruz	-	2019
LATIN AMERICA			
Brazil	University of São Paulo	2014	2014
Mexico	University of Guadalajara	1983	2006
	Instituto Tecnológico y de Estudios Superiores de Monterrey	-	2018
EUROPE			
Austria	University of Vienna	1993	1997
Belgium	Université Catholique de Louvain	1997	1997
Czech Republic	Charles University	1990	-
Finland	University of Helsinki	2011	2011
France	Université de Paris 7	1979	2015
	Université de Strasbourg	1991	2000
	Le Consortium des Universités de Grenoble	2000	2000
	École Normale Supérieure	2009	2009
	Institut d'Etudes Politiques de Paris (Sciences Po)	-	2009
	Centre National de la Recherche Scientifique	2013	-
	Université de Bordeaux	2014	2015
	International Fusion Energy Organization (ITER)	2014	-
	Agropolis International	2014	-
	École des Hautes Études en Sciences Sociales (EHESS)	2015	-
	Institut National des Langues et Civilisations Orientales (INALCO)	2016	2016
	MINES ParisTech	2016	2016
	École normale supérieure Paris-Saclay	2017	-
	Université Paris-Saclay	2018	-
École Polytechnique	-	2019	
Germany	Free University of Berlin	1984	1997
	Ludwig Maximilians University of Munich	1989	1998
	Rhenish Friedrich Wilhelm University of Bonn	1990	1998
	Rupert Charles University of Heidelberg	1990	1997
	Humboldt University of Berlin	1998	1999
	Technische Universität München	2006	2007
	Georg-August-Universität Göttingen	2011	2011
	Karlsruhe Institute of Technology	2011	2011
	University of Cologne	2013	2017
	RWTH Aachen University	2014	2014
	Berlin University of Technology	2016	2016
	Universität Hamburg	2017	2017
	Technische Universität Dresden	2018	2018
	Hungary	Eötvös Loránd University	-
Iceland	University of Iceland	-	2016
Ireland	University College Dublin, National University of Ireland Dublin	2014	2014
	University of Dublin, Trinity College Dublin	2014	2014
Italy	University of Siena	1989	-
	University of Bologna	1995	-
	Politecnico di Milano	2014	2014
	Università Ca' Foscari Venezia	2015	2015
Luxembourg	University of Luxembourg	2016	2016
Netherlands	Leiden University	1997	1997
	Utrecht University	1997	1997
	University of Groningen	2013	2014
	Wageningen University and Research	2018	-
Norway	Norwegian University of Science and Technology	2014	2014
	University of Oslo	-	2018
Poland	Jagiellonian University	2013	2017
Russia	Lomonosov Moscow State University	1987	-
	Saint-Petersburg State University	2013	2018

Country/region	Institution	MOU year of conclusion	SEA year of conclusion
Spain	Universidad de Barcelona	2014	2014
	Universitat Autònoma de Barcelona	2017	2017
	Universidad Autònoma de Madrid	-	2019
Sweden	Uppsala University	1997	1997
	Stockholm University	1997	1997
	KTH Royal Institute of Technology	2005	2005
	Lund University	2014	-
	Chalmers Tekniska Hogskola AB	-	2018
Switzerland	Swiss Federal Institute of Technology (ETH Zurich)	1989	-
	University of Lausanne	1997	1999
	University of Zurich	2013	2014
	Ecole Polytechnique Fédérale de Lausanne (EPFL)	2015	2015
	Univeristy of Bern	-	2018
Ukraine	National Technical University of Ukraine "Kyiv Polytechnic Institute"	2013	-
	Taras Shevchenko National University of Kyiv	2014	-
United Kingdom	University of Sussex	1989	2016
	University of Oxford	1991	-
	University of Cambridge	1997	-
	University of Nottingham	1999	2018
	University of Edinburgh	2005	2011
	University of Sheffield	2006	2006
	University of Manchester	2006	2007
	University of Bristol	2011	2012
	Institute of Education University of London	2011	-
	Newcastle University	-	2011
	University of Southampton	2017	2012
	University of Glasgow	2013	2016
	King's College London (KCL)	2014	2014
	University of Birmingham	2015	2011
	University of Leeds	2016	2016
	University of Durham	-	2018
	University of Exeter	-	2018
University of Warwick	-	2018	
Queen Mary University of London	-	2019	
MIDDLE EAST			
Israel	Tel Aviv University	1999	2006
Saudi Arabia	King Abdulaziz University (KAU)	2014	-
Turkey	Koç University	2011	2011
AFRICA			
Botswana	University of Botswana	2012	-
Democratic Republic of the Congo	University of Kinshasa	2015	-
Egypt	Egyptian Academy of Science, Research and Technology	2010	-
	Egypt-Japan University of Science and Technology (E-JUST)	2012	-
Ethiopia	Addis Ababa University	2017	-
Ghana	University of Ghana	2017	-
Guinea	University of Conakry	2013	-
Morocco	Mohammed V University of Rabat	2016	-
Sudan	University of Khartoum	2001	-
Uganda	Makerere University	2015	-
OTHERS			
	ASEAN University Network (AUN)	2009	-
	ASEAN+3 University Network (ASEAN+3 UNet)	2012	-
	United Nations University	2005	-
	Japan International Cooperation Agency	2010	-
	United Nations Development Programme (UNDP)	2016	-
	Food and Agriculture Organization of the United Nations (FAO)	2016	-
Total		183	132

Many of Kyoto University's individual faculties, graduate schools, institutes, and centers also have direct cooperation and exchange agreements with a broad range of institutions abroad. Details are available online at: www.oc.kyoto-u.ac.jp/agreement/en/list

Double/Joint Degrees

Double Degrees

(As of May 1, 2019)

Country/region	University	Kyoto University's graduate school	Degree
France	Université de Bordeaux	Energy Science	Doctoral
	L'Ecole normale supérieure de Lyon	Science	Doctoral
United Kingdom	University of Glasgow	Economics	Doctoral
United States of America	Cornell University	Management	Professional
China	Tsinghua University	Global Environmental Studies	Master
Indonesia	Institut Teknologi Bandung	Agriculture	Master
	Gadjah Mada University	Agriculture	Master
	Bogor Agricultural University	Agriculture	Master
		Global Environmental Studies	Master
Malaysia	University of Malaya	Public Health, Medicine	Master (Professional)
		Energy Science	Master
Taiwan	National Taiwan University	Public Health, Medicine	Master (Professional)
		Management	Master (Professional)
		Agriculture	Master
Thailand	Kasetsart University	Agriculture	Master
		Energy Science	Master
	Chulalongkorn University	Public Health, Medicine	Master (Professional)
		Mahidol University	Public Health, Medicine
			Global Environmental Studies

Joint Degrees

(As of May 1, 2019)

Country	University	Kyoto University's graduate school	Degree
Canada	McGill University	Medicine	Doctoral
Germany	Heidelberg University	Letters	Master

On-site Laboratory

The pursuit of “a flexible and dynamic approach to knowledge creation” is one component of Kyoto University’s strategy as a Designated National University. As part of those efforts, the University is implementing an initiative to establish locally-managed “On-site laboratories” in cooperation with overseas partner universities and research institutions.

https://www.kyoto-u.ac.jp/en/about/events_news/office/kikaku-joho/kikaku/news/2018/181218_1.html

IFOM-KU Joint Research Laboratory

Established by	The Graduate School of Medicine
Partner institution	The FIRC Institute of Molecular Oncology (IFOM), Italy
Location	Kyoto University
Functions	Advanced cancer biology research. Training of graduate students and early-career researchers.

Kyoto University Research Center San Diego

Established by	The Graduate School of Medicine
Partner institution	The University of California San Diego (UCSD), USA
Location	UCSD
Functions	Joint research in the field of medicine. Increased recruitment of talented international students. Expansion of collaboration with industrial partners.

Tsinghua University-Kyoto University Cooperative Research and Education Center for Environmental Technology

Established by	The Graduate School of Engineering and the Graduate School of Global Environmental Studies (GSGES)
Partner institution	The Graduate School at Shenzhen, Tsinghua University, China
Location	Tsinghua University
Functions	Research to address environmental problems. Possible development of international joint diploma programs.

Kyoto University On-site Laboratory at Mahidol University for Education and Research Collaboration in Environmental Studies

Established by	The Graduate School of Global Environmental Studies (GSGES)
Partner institution	Mahidol University, Thailand
Location	Mahidol University
Functions	Collaborative education and research on environmental studies. Recruitment of talented international students. Possible development of an international joint-degree program.

Smart Materials Research Center

Established by	The Institute for Integrated Cell-Material Sciences (iCeMS), Kyoto University Institute for Advanced Study (KUIAS)
Partner institution	Vidyasirimedhi Institute of Science and Technology (VISTEC), Thailand
Location	VISTEC
Functions	Research in material science fields. Training graduate students and early-career researchers for active roles in international academia.

Overseas Offices and Facilities

Overseas Branch Offices

(As of May 1, 2019)

Name	Country	City	Year established
Kyoto University European Center	Germany	Heidelberg	2014
Kyoto University ASEAN Center	Thailand	Bangkok	2014
Kyoto University North American Center (Kyoto University San Diego Liaison Office)	United States of America	Washington, DC (San Diego)	2018 (2017)

Overseas Offices and Facilities

(As of May 1, 2019)

Affiliation	Name	Country/region	City	Year established
Graduate School of Science	Satellite Office at Chulalongkorn University	Thailand	Bangkok	2004
	Research Base for Biodiversity of African Tropical Forest	Gabon	Libreville	2009
Astronomical Observatory, Graduate School of Science	CHAIN Peru Station	Peru	Ica	2010
Graduate School of Medicine	Kyoto University Research Center San Diego	United States of America	San Diego	2019
Graduate School of Engineering	Kyoto University-Tsinghua University Cooperative Research and Education Center for Environmental Technology	China	Shenzhen	2005
	Global Center of Excellence Kyoto University - Institut Teknologi Bandung for GCOE Joint Research and Education Center	Indonesia	Bandung	2008
	Kyoto University-University of Malaya Overseas Base in Malaysia for Education and Research	Malaysia	Kuala Lumpur	2010
Graduate School of Agriculture	JASTIP Bioresource and Biodiversity Joint Laboratory	Indonesia	Bogor	2015
	Japanese Research-Team Laboratory, Kinabalu Park Headquarters	Malaysia	Kota Kinabalu	1995
	Japanese Research-Team Laboratory, Deramakot Forest Reserve	Malaysia	Sandakan	2003
	Khon Kaen Research Office of the Graduate School of Agriculture, Kyoto University	Thailand	Khon Kaen	1996
	Kyoto University Research Office at Kasetsart University	Thailand	Bangkok	2014
	Overseas Office of Graduate School of Agriculture, Kyoto University at NTU	Taiwan	Taipei	2015
Graduate School of Agriculture/Graduate School of Global Environmental Studies	Kyoto University Satellite Office at Bogor Agricultural University	Indonesia	Bogor	2015
Graduate School of Asian and African Area Studies/Center for Southeast Asian Studies	Cambodia Field Station	Cambodia	Phnom Penh	2010
	Makassar Field Station	Indonesia	Makassar	2003
	Pekanbaru Field Station	Indonesia	Pekanbaru	2010
	Laos Field Station	Laos	Vientiane	2002
	Myanmar Field Station	Myanmar	Yangon, Yezin	2003
Graduate School of Asian and African Area Studies/Center for African Area Studies	Cameroon Field Station	Cameroon	Yaounde	2003
	Ethiopia Field Station	Ethiopia	Addis Ababa, Jinka	2003
	Nairobi Field Station	Kenya	Nairobi	2003
	Namibia Field Station	Namibia	Windhoek	2008
	Niger Field Station	Niger	Niamey	2012
	Tanzania Field Station	Tanzania	Dar-es-Salaam	2003
Zambia Field Station	Zambia	Lusaka	2003	

Affiliation	Name	Country/region	City	Year established
Graduate School of Global Environmental Studies	Hue Kyoto University GSGES Office	Viet Nam	Hue	2006
	Hanoi Kyoto University GSGES Office	Viet Nam	Hanoi	2008
	Mahidol Kyoto University GSGES Office (Kyoto University On-site Laboratory at Mahidol University for Educational and Research Collaboration in Environmental Studies)	Thailand	Bangkok	2016
Graduate School of Global Environmental Studies/Graduate School of Engineering	Danang Kyoto University GSGES Office	Viet Nam	Da Nang	2006
Institute of Advanced Energy	Thai Research Station Collaborative Research Laboratory	Thailand	Pathum Thani	2003
	JASTIP Energy & Environment Joint Laboratory	Thailand	Pathum Thani	2016
	JASTIP Energy & Environment Joint Laboratory	Thailand	Bangkok	2016
Research Institute for Sustainable Humansphere	Equatorial Atmosphere Radar	Indonesia	Bukittinggi	2001
	RISH-RDUB Satellite Office	Indonesia	Bogor	2004
	MHP Acacia Research Office	Indonesia	Muara Enim	2005
	ARN Joint Laboratory/JASTIP Bioresources & Biodiversity Joint Laboratory	Indonesia	Bogor	2016
Disaster Prevention Research Institute	JASTIP Disaster Prevention Joint Laboratory	Malaysia	Kuala Lumpur	2016
	JASTIP Disaster Prevention Joint Laboratory	Viet Nam	Ho Chi Minh	2016
Primate Research Institute	Orangutan Rehabilitation Project	Malaysia	Bukit Merah	2011
	Research Project on Bonobos in the Luo Reserve	Democratic Republic of the Congo	Djolu	1973
	Bossou-Nimba Research Station	Guinea	Bossou	1976
	Kalinzu Forest Research Project by the Primate Research Institute	Uganda	Bushenyi	1997
Center for Southeast Asian Studies	Jakarta Liaison Office	Indonesia	Jakarta	1970
	Bangkok Liaison Office	Thailand	Bangkok	1963
	JASTIP Headquarters	Thailand	Pathum Thani	2016
	CSEAS Lima Office	Peru	Lima	2006
Center for Ecological Research	Field Station for Tropical Forest and Biodiversity Studies	Malaysia	Miri	1991
Wildlife Research Center	Kuala Sungai Danum Research Station	Malaysia	Danum Valley	2010
	Portugal Research Station	Portugal	Viana do Castelo	2016
	Kuieiras Research Station	Brazil	Estado de Amazonas	2018
	D/R Congo Research Station	Democratic Republic of Congo	Mbali	2016
	Ghana Research Station	Ghana	Accra	2009
	Kyoto University African Ape Expedition	Tanzania	Kigoma	1965
	African Anthropological and Biological Field Research Center	Tanzania	Arusha	2006
	Ugalla Wildlife Research Station	Tanzania	Ugalla	2008
Tanzania Research Station	Tanzania	Dar-es-Salaam	2014	
Institute for Advanced Study	Smart Materials Research Center	Thailand	Rayong	2018
Center for African Area Studies	Kyoto University Africa Office	Ethiopia	Addis Ababa	2018

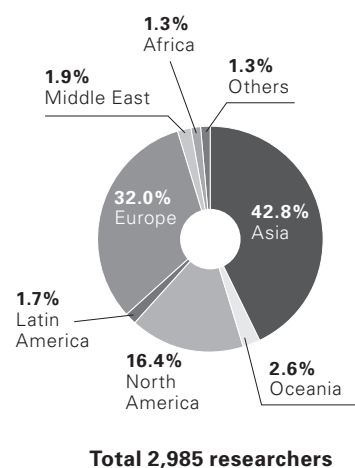
Researchers from Abroad

Academic year 2017 (Apr. 1-Mar. 31)

Country/region	Number of researchers
ASIA	
Bangladesh	12
Bhutan	10
Brunei	1
Cambodia	4
China	396
India	90
Indonesia	114
Laos	9
Malaysia	33
Maldives	1
Mongolia	4
Myanmar	30
Nepal	6
Pakistan	2
Philippines	14
Republic of Korea	231
Singapore	28
Sri Lanka	1
Taiwan	170
Thailand	78
Viet Nam	45
OCEANIA	
Australia	61
New Zealand	17
Solomon	1
NORTH AMERICA	
Canada	65
United States of America	424
LATIN AMERICA	
Argentina	5
Brazil	18
Chile	3
Colombia	4
Costa Rica	1
Mexico	17
Paraguay	1
Peru	1

Country/region	Number of researchers
EUROPE	
Armenia	1
Austria	23
Belarus	1
Belgium	26
Bosnia and Herzegovina	1
Bulgaria	1
Croatia	4
Czech Republic	17
Denmark	10
Finland	13
France	170
Germany	157
Greece	10
Hungary	5
Iceland	4
Ireland	6
Italy	60
Kyrgyz Republic	2
Lithuania	2
Luxembourg	2
Netherlands	36
North Macedonia	1
Norway	7
Poland	24
Portugal	11
Romania	5
Russia	38
Serbia	2
Slovakia	2
Slovenia	3
Spain	41
Sweden	36
Switzerland	35
Tunisia	1
Ukraine	2
United Kingdom	194
Uzbekistan	1
MIDDLE EAST	
Iran	16
Israel	15
Oman	2
Qatar	1
Saudi Arabia	3
Syria	1
Turkey	16
United Arab Emirates	2

Country/region	Number of researchers
AFRICA	
Cameroon	2
Egypt	15
Ethiopia	6
Kenya	1
Libya	1
Madagascar	4
Morocco	1
Nigeria	1
Republic of Congo	1
Republic of South Africa	6
Sudan	1
OTHERS	
Others	39
Total	2,985



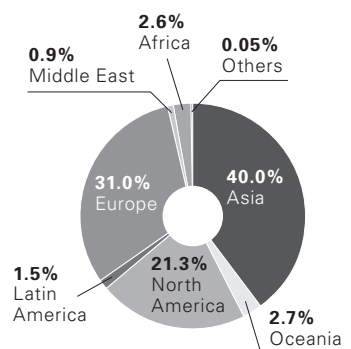
Researchers Going Abroad

Academic Year 2017 (Apr. 1-Mar. 31)

Country/region	Number of researchers
ASIA	
Bangladesh	41
Bhutan	26
Brunei	2
Cambodia	54
China	740
India	141
Indonesia	297
Laos	44
Malaysia	127
Maldives	1
Mongolia	17
Myanmar	117
Nepal	42
Pakistan	7
Philippines	62
Republic of Korea	464
Singapore	150
Sri Lanka	9
Taiwan	357
Thailand	363
Viet Nam	175
OCEANIA	
Australia	159
Fiji	5
New Zealand	36
Palau	1
Papua New Guinea	3
Samoa	1
Solomon	1
Tonga	4
Vanuatu	7
NORTH AMERICA	
Canada	176
United States of America	1552
LATIN AMERICA	
Argentina	10
Bolivia	1
Brazil	29
Chile	6
Colombia	7
Cuba	4
El Salvador	1
Mexico	45
Peru	18
EUROPE	
Albania	3
Austria	99
Azerbaijan	2
Belarus	1
Belgium	47

Country/region	Number of researchers
Bosnia and Herzegovina	1
Bulgaria	3
Croatia	18
Cyprus	5
Czech Republic	53
Denmark	37
Estonia	6
Finland	33
France	403
Georgia	1
Germany	458
Greece	45
Hungary	25
Iceland	16
Ireland	24
Italy	195
Kazakhstan	5
Kosovo	1
Kyrgyz Republic	9
Lithuania	3
Luxembourg	6
Malta	3
Moldova	1
Netherlands	90
North Macedonia	4
Norway	19
Poland	53
Portugal	66
Romania	10
Russia	44
Serbia	1
Slovakia	5
Slovenia	17
Spain	155
Sweden	78
Switzerland	133
Ukraine	1
United Kingdom	329
Uzbekistan	2
MIDDLE EAST	
Iran	7
Israel	22
Jordan	5
Lebanon	1
Oman	5
Saudi Arabia	2
Turkey	15
United Arab Emirates	14

Country/region	Number of researchers
AFRICA	
Benin	2
Botswana	3
Cameroon	12
Côte d'Ivoire	1
Democratic Republic of the Congo	17
Egypt	37
Ethiopia	14
Gabon	2
Ghana	1
Guinea	3
Kenya	19
Madagascar	7
Malawi	5
Morocco	5
Mozambique	5
Namibia	5
Niger	4
Republic of South Africa	19
Rwanda	1
Seychelles	1
Sudan	2
Tanzania	20
Tunisia	6
Uganda	14
Zambia	2
OTHERS	
Others	4
Total	8,094



Total 8,094 researchers

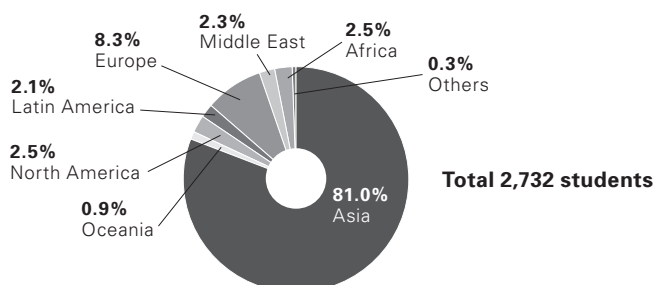
Students from Abroad

(As of May 1, 2019)

Country/region	Undergraduates		Graduate students				Other*	Total
	Under-graduates	Non-regular students	Master's course	Doctoral course	Professional course	Non-regular students	Non-regular students	
ASIA								
Bangladesh			5	22		2		29
Brunei				1				1
Cambodia			6	3		2		11
China	121	82	565	464	71	92	33	1,428
India	3		4	39	2		3	51
Indonesia	6		38	46	5	7	3	105
Laos	1	1		2				4
Malaysia	2	1	7	17	2	2	1	32
Mongolia	3		3	4	2	1		13
Myanmar	1		8	21	1		1	32
Nepal			3	5		3		11
Pakistan			1	4	1			6
Philippines	1	5	2	11	2		3	24
Republic of Korea	59	12	56	66	6	7	5	211
Singapore	3	5	1	4	3			16
Sri Lanka	1	1		2	2			6
Taiwan	5	9	37	53	10	8	1	123
Thailand	8	3	10	27		4	7	59
Timor-Leste							1	1
Viet Nam	4	3	11	26		4	3	51
OCEANIA								
Australia	1	11	1	2				15
Fiji			3					3
New Zealand		1		2			1	4
Samoa			1					1
Solomon			1					1
NORTH AMERICA								
Canada	1	5	4	6	1	1		18
United States of America		9	17	16		2	7	51
LATIN AMERICA								
Argentina	1	1	2	1				5
Belize						1		1
Brazil	3		3	8	1	1	4	20
Chile			1		1	1		3
Colombia				2				2
Costa Rica			2	1				3
Dominican Republic							1	1
Ecuador							1	1
Grenada				1				1
Jamaica						1		1
Mexico		1	3	2				6
Panama				1				1
Paraguay				1			1	2
Peru			2	5			1	8
Honduras							1	1
Uruguay				1			1	2
EUROPE								
Austria		1		2				3
Azerbaijan			1		1			2
Belarus							1	1
Belgium			1	2		1		4
Bulgaria		1					1	2
Croatia				1				1
Denmark						1	1	2
Estonia				3				3
Finland		1		2			1	4
France		16	3	10		16	5	50
Georgia		1						1
Germany		11	3	6	1	14	1	36
Greece				1			1	2
Hungary		1		2			1	4
Iceland		1						1
Ireland		1	1					2
Italy	1	1		6		4	2	14
Kazakhstan	1		1	2		1		5
Kosovo			1					1

Country/region	Undergraduates		Graduate students				Other*	Total
	Under-graduates	Non-regular students	Master's course	Doctoral course	Professional course	Non-regular students	Non-regular students	
Kyrgyz Republic			1					1
Latvia			2					2
Lithuania			1	2				3
Luxembourg			1			1		2
Netherlands	1	2	1			2	3	9
Poland		2				2	2	6
Portugal				3		2		5
Romania				2				2
Russia	1	1	5	2		1	1	11
Spain		4	1	4		2		11
Sweden		7	1			2		10
Switzerland		2		3				5
Tajikistan		1						1
Turkmenistan					1			1
Ukraine	1		1	1				3
United Kingdom		9	2	3			2	16
Uzbekistan		1	1					2
MIDDLE EAST								
Afghanistan				1	1	1	1	4
Bahrain				1				1
Iran	1	1	4	7		3	2	18
Iraq							1	1
Israel	1	1		2	1	1	3	9
Kuwait				1				1
Lebanon				3	1			4
Oman			3	1				4
Palestine				5				5
Syria							1	1
Turkey	1	2	2	7	1	3		16
AFRICA								
Angola					1			1
Benin				1				1
Botswana			1	1				2
Democratic Republic of the Congo			1	2				3
Egypt	5		1	9			1	16
Ethiopia				2				2
Ghana			1					1
Guinea				2				2
Kenya			6	4				10
Liberia			1					1
Madagascar			1	1			1	3
Mali				1				1
Mauritania					1			1
Morocco						1	1	2
Mozambique			2					2
Nigeria			1	1				2
Republic of South Africa				2			1	3
Senegal			1					1
Sudan		1		3			1	5
Tunisia			1					1
Uganda			1	1		1		3
Zambia			2					2
Zimbabwe			2				1	3
OTHERS								
Others		5	2					7
Total	237	224	858	981	119	198	115	2,732

*Research centers and other academic facilities

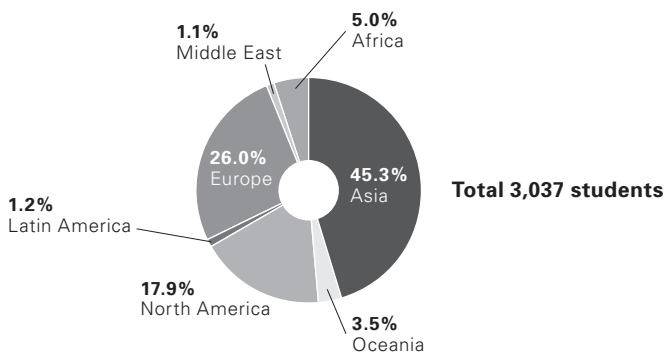


Students Going Abroad

Academic Year 2018 (Apr. 1- Mar. 31)

Country/region	Under-graduates	Master's course	Doctoral course	Professional course	Non-regular students	Total
ASIA						
Bangladesh			5			5
Bhutan	7	1	8			16
Brunei	1					1
Cambodia	1	3	4			8
China	66	121	136	4	6	333
India	3	10	37			50
Indonesia	22	46	64			132
Laos	2	8	6			16
Malaysia	23	41	33			97
Mongolia	2	2	7			11
Myanmar	3	7	32		2	44
Nepal		4	16			20
Pakistan			4			4
Philippines	7	10	9			26
Republic of Korea	26	57	54			137
Singapore	3	3	15			21
Sri Lanka		7	7		1	15
Taiwan	23	68	59	16	1	167
Thailand	44	68	51	2	8	173
Viet Nam	34	35	32			101
OCEANIA						
Australia	31	16	16			63
Fiji		6	2			8
Marshall		1				1
New Caledonia	2					2
New Zealand	9	10	5			24
Palau	1					1
Papua New Guinea		1				1
Solomon		2	3			5
Tonga	1					1
Vanuatu			1			1
NORTH AMERICA						
Canada	36	17	23	1		77
United States of America	86	139	235	4	2	466
LATIN AMERICA						
Belize	1					1
Brazil		2	9			11
Chile		4	2			6
Colombia			1			1
Costa Rica	2					2
Ecuador	1					1
Panama			1			1
Peru	1					1
Mexico	1	2	10			13
EUROPE						
Austria	1	4	18			23
Azerbaijan			1			1
Belgium	1	3	5	15		24
Bosnia and Herzegovina			1			1
Cyprus		2	1			3
Czech Republic	1	2	7			10
Denmark	1	3	5			9
Estonia		1				1
Finland	3	1	4			8
France	24	33	52	17		126
Germany	29	34	66	16	1	146
Greece	1	2	3			6
Hungary		6	2			8
Iceland			1			1
Ireland	1	3	12			16
Italy	7	15	34			56
Kazakhstan			1			1
Kyrgyz Republic		1			1	2
Luxembourg				15		15
Malta	2		1			3
Netherlands	8	7	13	1		29

Country/region	Under-graduates	Master's course	Doctoral course	Professional course	Non-regular students	Total
Norway		2				2
Poland		5	6			11
Portugal		5	13			18
Romania			1			1
Russia	2	3	7	1		13
Spain	2	16	30			48
Sweden	6	5	6	1		18
Switzerland	6	9	23			38
United Kingdom	41	27	67	15	1	151
MIDDLE EAST						
Afghanistan		1				1
Iran			5			5
Israel	1		2	1		4
Jordan			2			2
Lebanon			1			1
Oman		1				1
Turkey	2	3	11			16
United Arab Emirates			2			2
AFRICA						
Benin		1	1			2
Botswana		1	2			3
Cameroon			2			2
Democratic Republic of the Congo			5			5
Côte d'Ivoire		1				1
Ethiopia	1	1	12			14
Gabon			3			3
Ghana	2	1				3
Guinea			3			3
Kenya		7	22	1		30
Madagascar			7			7
Malawi	1	4	2			7
Morocco		1	2			3
Mozambique		1	3			4
Namibia	1		2			3
Niger			1			1
Republic of South Africa			6			6
Rwanda			1			1
Senegal		2	4			6
Sudan			1			1
Tanzania	7	8	8			23
Uganda	1	4	16			21
Zambia		1	2			3
Total	591	918	1,395	110	23	3,037





KYOTO UNIVERSITY

www.kyoto-u.ac.jp/en

CONTACT

International Affairs Division

Address: Yoshida-honmachi, Sakyo-ku, Kyoto 606-8501

Email: ipromo@mail2.adm.kyoto-u.ac.jp

www.oc.kyoto-u.ac.jp/en

International Education and Student Mobility Division

Address: Yoshida-honmachi, Sakyo-ku, Kyoto 606-8501

Email: studyku@mail2.adm.kyoto-u.ac.jp

www.kyoto-u.ac.jp/en/education-campus